



COVER STYL'

SMART INTERIOR DESIGN





LET'S MAKE A **CHANGE** AS **WHY REPLACE WHEN YOU CAN UPGRADE ?**

As yes when using our solution you are contributing to help change the world!

This is part of making a change, being part of a new thinking generation.

Thank you for being part of the change!

RECYCLE | RECUPERATE | RECOVER | REUSE

Technical Information

Interior Film

Our stretchable architectural film is a decorative film with adhesive that is applicable on site.

Recreate your world with our stretchable architectural film. It is an ideal way to finish many environments on site with little or no down time. Our stretchable architectural film is used extensively for interior applications such as Hotels, Shops, Washrooms, Student accomodation, Elevators, etc. With its light weight and minimal thickness, our stretchable architectural film is a popular choice for cruise ship interiors. Our stretchable architectural film offers hundreds of patterns including Solid Colour, Metallic, Glitter, Leather, Fabric, Soft Touch and also natural material replications such as Wood, Stone and Marble. Our stretchable architectural film's original pressure sensitive adhesive ensures clean, fast installation on a variety of substrates. With its superior flexibility, our stretchable architectural film can be installed on highly detailed and 3D surfaces.

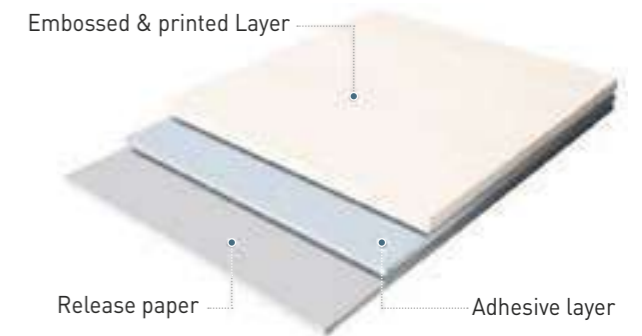
Product Structure

Our stretchable architectural film is a printed film with adhesive

1. Embossed & printed film layer (vinyl-chloride plastic)
2. Simplified adhesive (acrylic plastic)
3. Release paper

The above is a representative structure of our stretchable architectural film .

The actual structures and materials may be slightly different for each series.



Easy to install with Air release adhesive

Our stretchable architectural film

is applied using an Acryl type adhesive, which has an adhesive surface with grid grooves for air-release between the film and the substrate.

The air is released along these grooves, enabling the film to be quickly and easily affixed to large or complex surfaces.

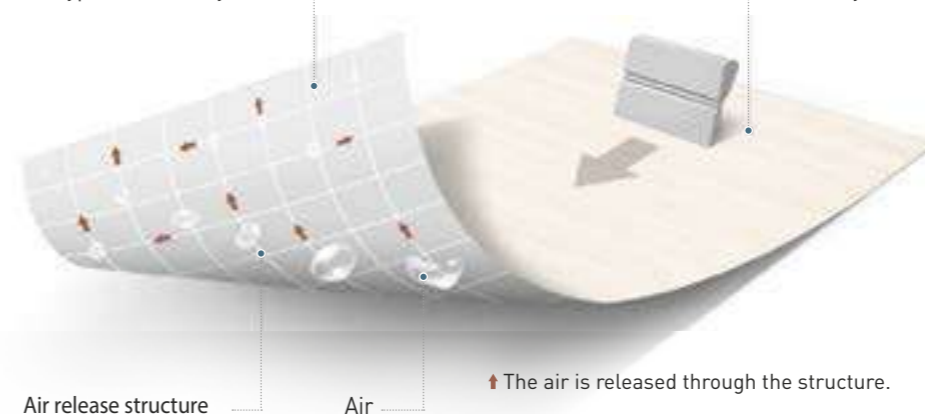
This provides a higher quality finish.

Facilitates the release of air when the film is affixed, enabling easy application to large or complex surfaces.

Air release structure

EA Type adhesive layer

Film layer



Enabling the film to be installed quick and easy.

Environment

We pay attention to nature

Our stretchable architectural film is an eco-friendly film that care about healthy environment.

- Free from harmful heavy metals (lead, cadmium, mercury, hexavalent chromium, etc)
- Formaldehyde (HCHO), the substance that causes sick house syndrome, is not released.
- Minimized release of volatile organic compounds (TVOC, toluene, etc)
- It meets the safety standard (KF mark standard) applied to wallpaper and paperboard.
- Meets the safety requirements for hazardous chemicals in the Common Safety Standards of Children's Products.
- Excellent maintenance and anti-mold function, which helps to maintain a pleasant surrounding environment.

Heavy Metal [Pb, Cd, Hg, CrVI]		Formaldehyde [HCHO]		Phthalate	
Standard	None detected	Standard	None detected	Standard	None detected
[Pb] 5 mg/kg		0.12 mg/m ³ h		[DEHP] less than 0.1%	
[Cd] 0.5 mg/kg				[DBP] less than 0.1%	
[Hg] 2 mg/kg				[BBP] less than 0.1%	
[CrVI] 1 mg/kg					

'Hazardous chemicals' criteria for the **Common Safety Standards for Children's Products**

Hazardous Substances [Sb, As, Ba, Cd, Cr, Pb, Hg, Se]			
Standard	Satisfactory	Standard	Satisfactory
[Sb] 60 mg/kg		[Cr] 60 mg/kg	
[As] 25 mg/kg		[Pb] 90 mg/kg	
[Ba] 1000 mg/kg		[Hg] 60 mg/kg	
[Cd] 75 mg/kg		[Se] 500 mg/kg	

Safety

We pay attention to Safety

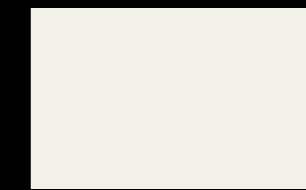
Our stretchable architectural film is a safe interior film that can be used in any environment with excellent flame retardancy and quality stability.

Flame Retardancy [Certified by the Korean Fire Industry Technical Institute]		Stain resistance	
Carbonization length less than 20cm	Satisfactory		No Stains
Carbonization area less than 30cm ²			
Flame retardant certification less than 3sec			
Smoke density 200 Ds			
			
			

Obtain the certificate, Introduction of company for bidding construction projects, construction guide of our products by inquiring with our head office or distributor.



P. 21



P. 27



P. 27



P. 27



PRINTABLE



2019 | Zurich, Switzerland



BEFORE



AFTER



CT83

HUNDREDS OF DOORS RENOVATED FAST & WITH STYLE



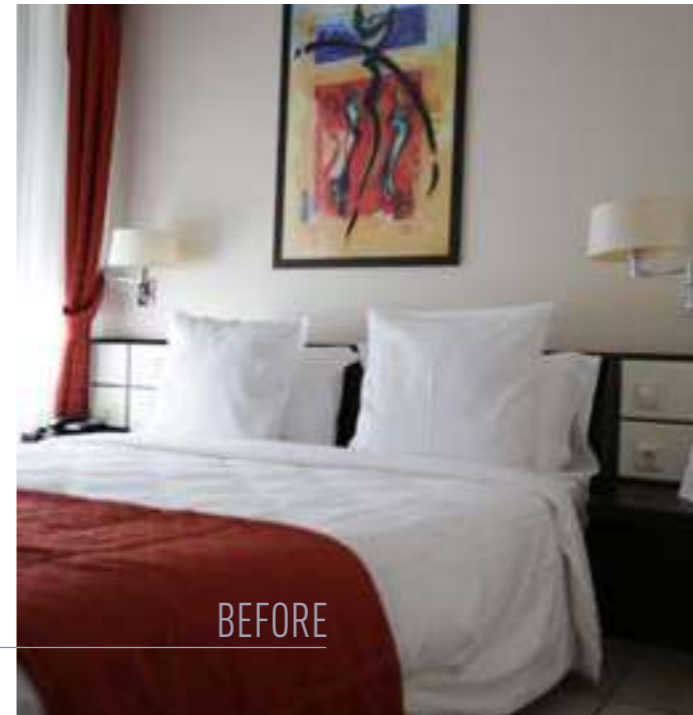
2019 | Luxembourg



D4



RECYCLE, RECUPERATE, RECOVER & REUSE.
THE INNOVATION OF RENOVATION!



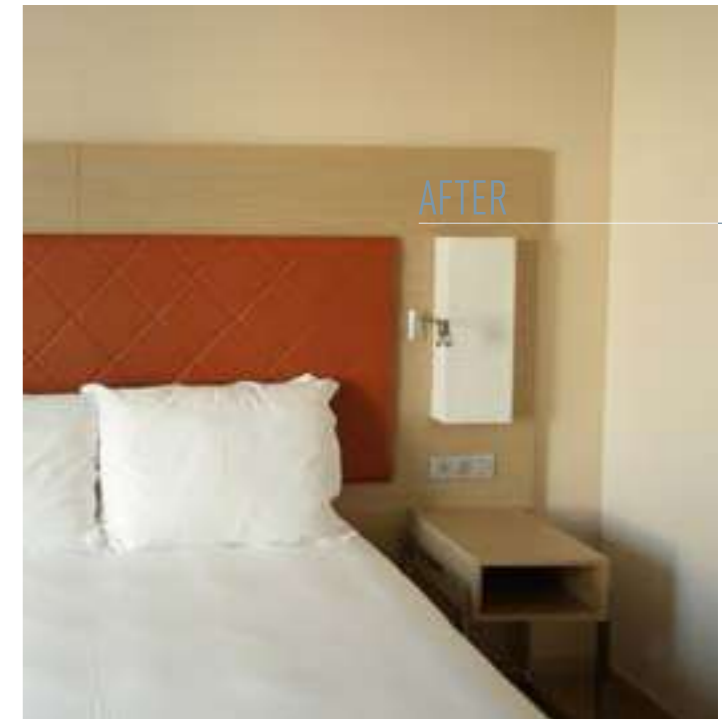
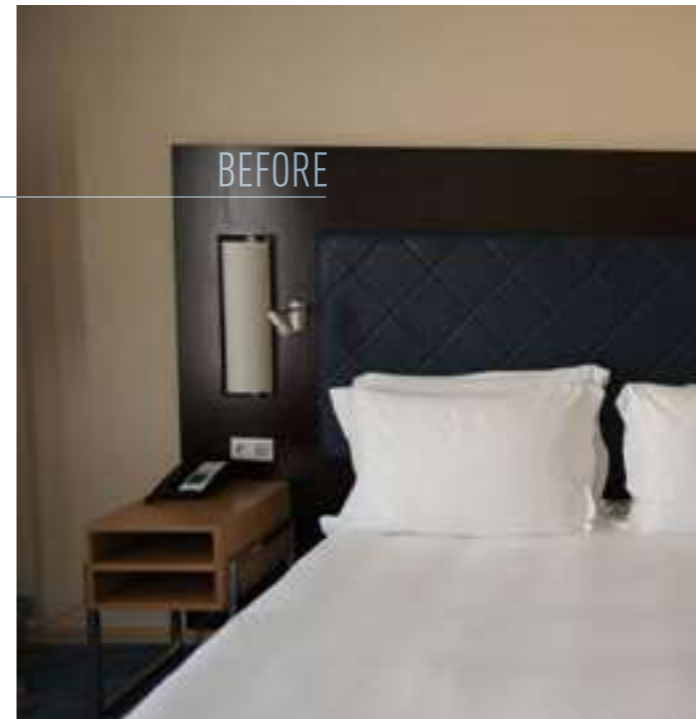
BEFORE



AFTER



DON'T WAIT ANY LONGER, SPARE BETWEEN 50-70% FROM TRADITIONAL RENOVATION. AN INVESTMENT WHICH WILL PAY BACK

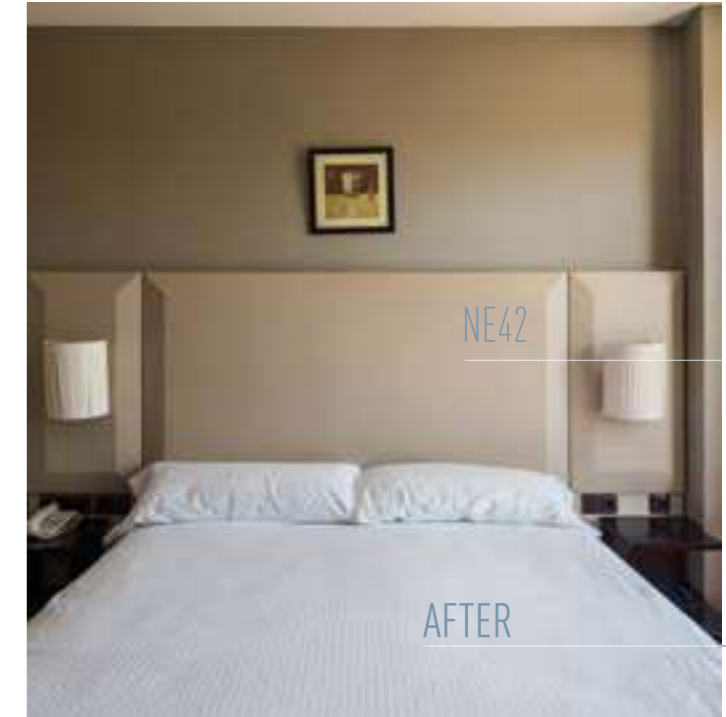
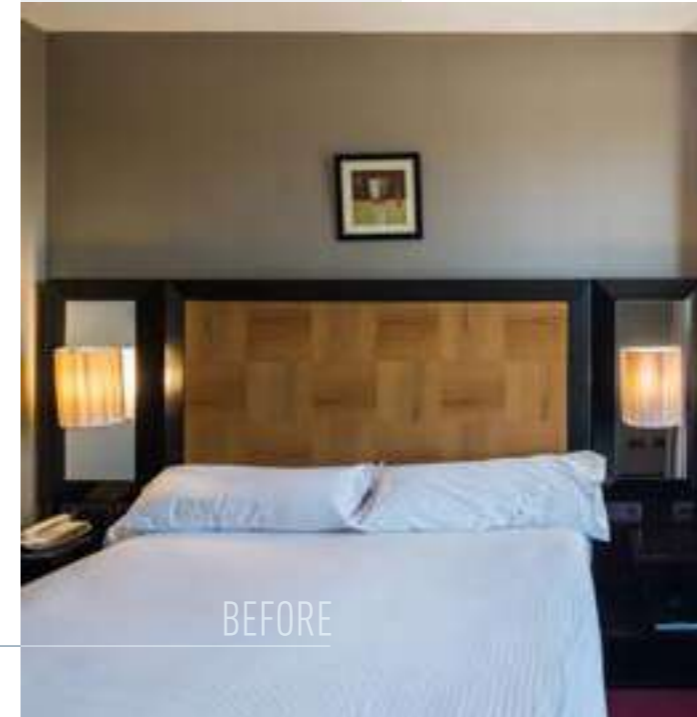


**THE LIMITS ARE YOUR IMAGINATION,
DOORS MADE OF LEATHER? ANYTHING IS POSSIBLE!**

M
HOTEL
MAYORAZGO
2020 | Madrid, Spain



PRINCESA DE ESTER
APARTAMENTOS
2019 | Madrid, Spain



AFFORDABLE, STYLISH & SUITABLE FOR HUMID ENVIRONMENT – YES!



REFURBISH WITHOUT HAVING TO CLOSE OR DISCONTINUE YOUR DAILY ACTIVITY, IT'S POSSIBLE!

BETTER, GLITTER, STRONGER

LIGHT UP YOUR EVERYDAY LIFE

R6

✓ R6



✓ R5



✓ R7



✓ R8



✓ R9



✓R10



✓R11



✓R15



✓R16



✓R12



✓R17



✓R13



✓R14



✓R18



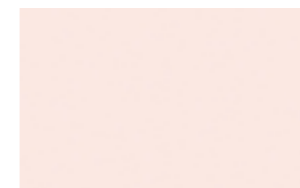
✓R19

OI

Look at life in colour with our Solid Colour range! Each colour creates a unique atmosphere. Whether “pop” or sober, they embellish your walls and furniture. What are you waiting for? Give your bedrooms or lounges their own unique personality!

Solid Colour

Unique environments completed with colour and texture. The space that draws attention without needing to add eye-catching decorations. Express your own unique self.



⊖ NF01



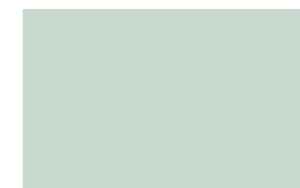
⊖ NF03



⊖ NF02



⊖ RM16



✓ NE54



⊖ RM15

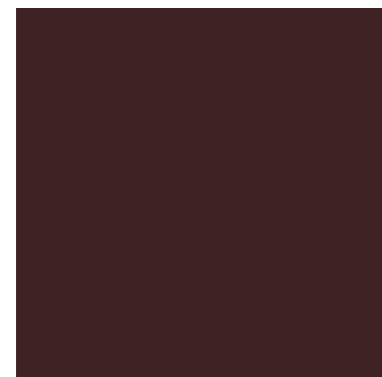


NE53 | NF06

The above image is for illustrational purpose only, and the real product may be different.



SOFT TOUCH



SOFT TOUCH NF12



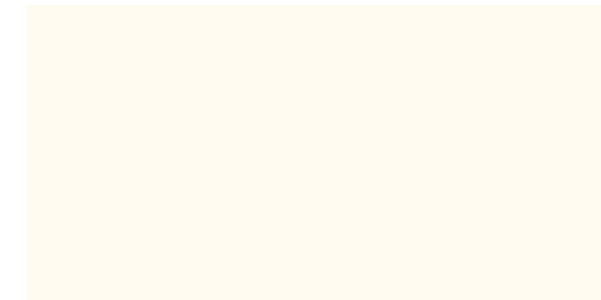
SOFT TOUCH NF13



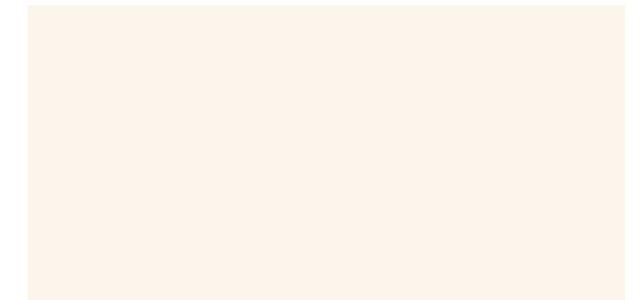
SOFT TOUCH NF14



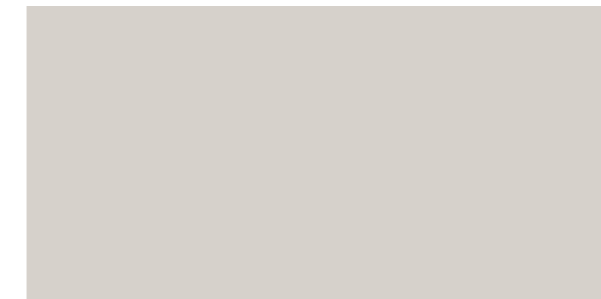
Our architectural film Soft Touch Series is a premium product featuring a differentiated special surface with texture finish that has outstanding contamination and scratch resistance. The gentle visual effects and luxurious touch further upgrades the class of the space.



SOFT TOUCH NE77



SOFT TOUCH NF15



SOFT TOUCH NF16



SOFT TOUCH NE78



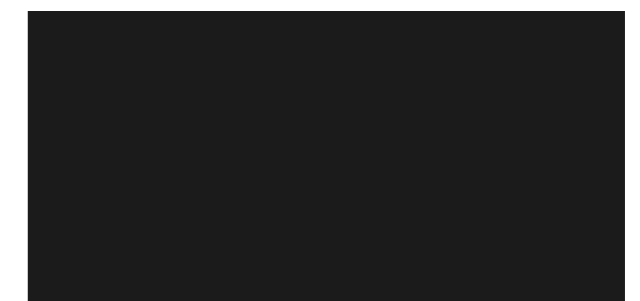
SOFT TOUCH NE79



SOFT TOUCH NE82



SOFT TOUCH NE80



SOFT TOUCH NE81

Painted Wood



NF19

The above image is for illustrational purpose only, and the real product may be different.



⊗ NF17



⊗ NF18



✓ NF19



⊗ NF20



⊗ AC01



⊗ AC04



✓ J17



⊗ NF21



⊗ AB02



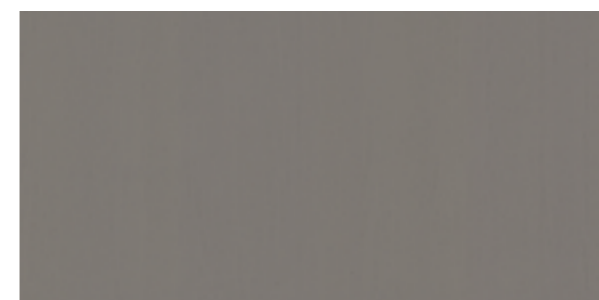
⊗ NF23



⊗ AB03



⊗ NF22



✓ NE46



✓ J18

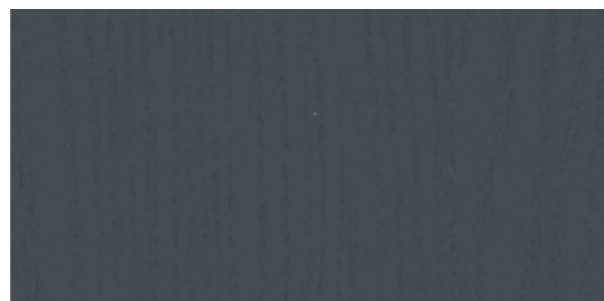
Painted Wood



⊘ NE45



⊘ AB06



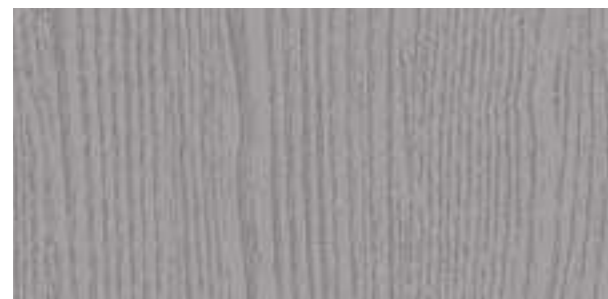
✓ AB05



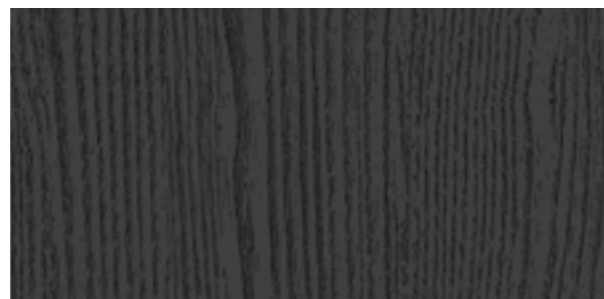
⊘ NF24



⊘ AB07

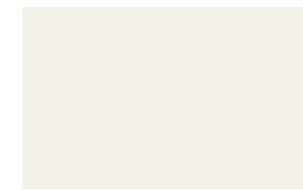


⊘ NF25

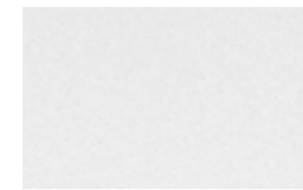


⊘ NF26

Texture



✓ J4



✓ J7



✓ J15



✓ MA16



✓ Q2



⊘ MA12



⊘ MA10



✓ J14



⊘ LP01



✓ Q1



⊘ MA14



✓ J2



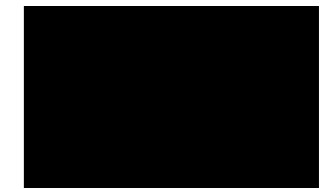
✓ NE11



✓ J16



✓ J9



✓ J5



02

Inspired by a number of timber species, our Wood range reveals the charm of your rooms, giving them a natural touch. Are you dreaming of an interior with a “Swiss chalet” or Canadian-style look? An oak, beech, teak look....Placed in strategic places, such as a table or a wardrobe door, you would only need the smell of the woods and birdsong to transport you to the middle of the forest.

Wood



Wood texture naturally fits anywhere

Origin Wood



⊘ NF27



✓ NF28

Origin Wood



✓ NF29



⊗ NF30



NF29

The above image is for illustrational purpose only, and the real product may be different.

Origin Wood



⊘ NF31



✓ NF32



⊘ NF33



NF32

The above image is for illustrational purpose only, and the real product may be different.

Origin Wood



✓ NF34



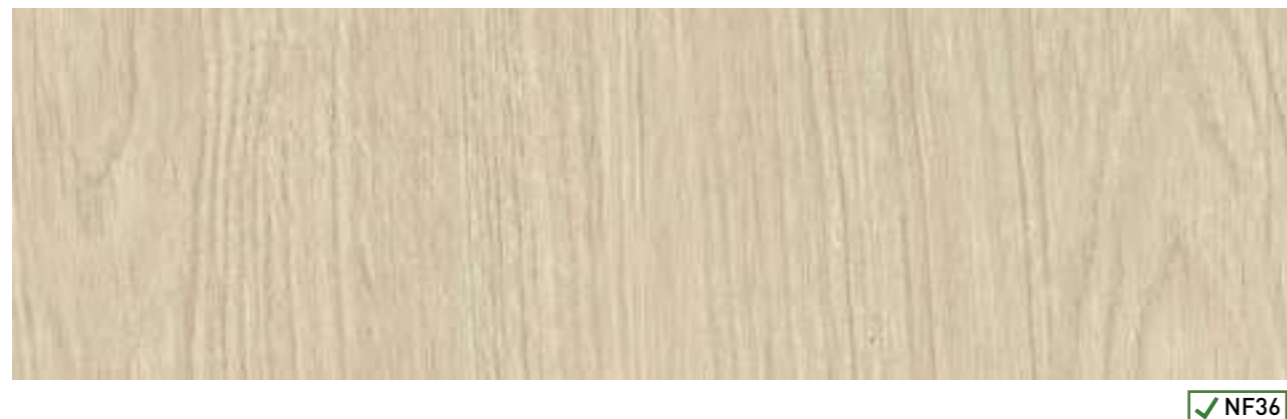
⊘ NF35



NF34

The above image is for illustrational purpose only, and the real product may be different.

Origin Wood



Origin Wood



NF40

The above image is for illustrational purpose only, and the real product may be different.



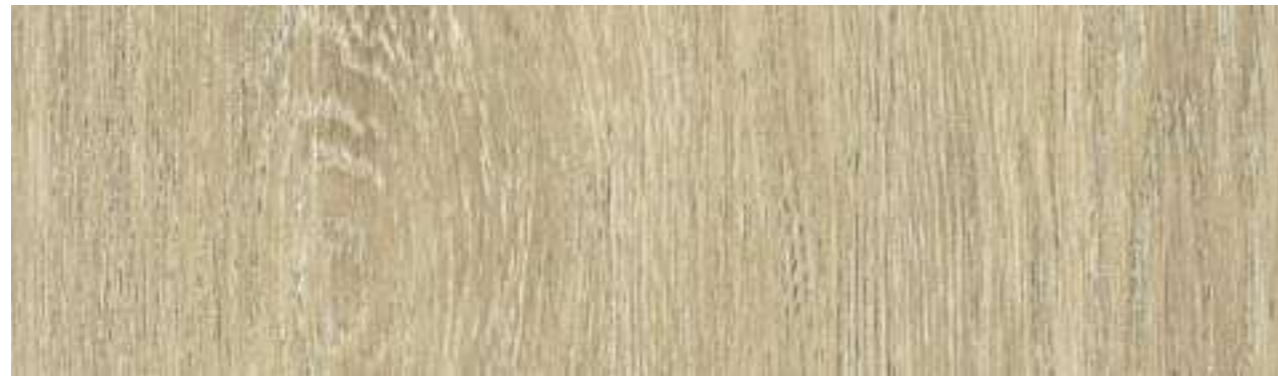
✓ NF40



⊘ NF41

✓ Available ⊘ On request

Origin Wood



🚫 NF42



✅ NF43



NF43

The above image is for illustrational purpose only, and the real product may be different.



NF44

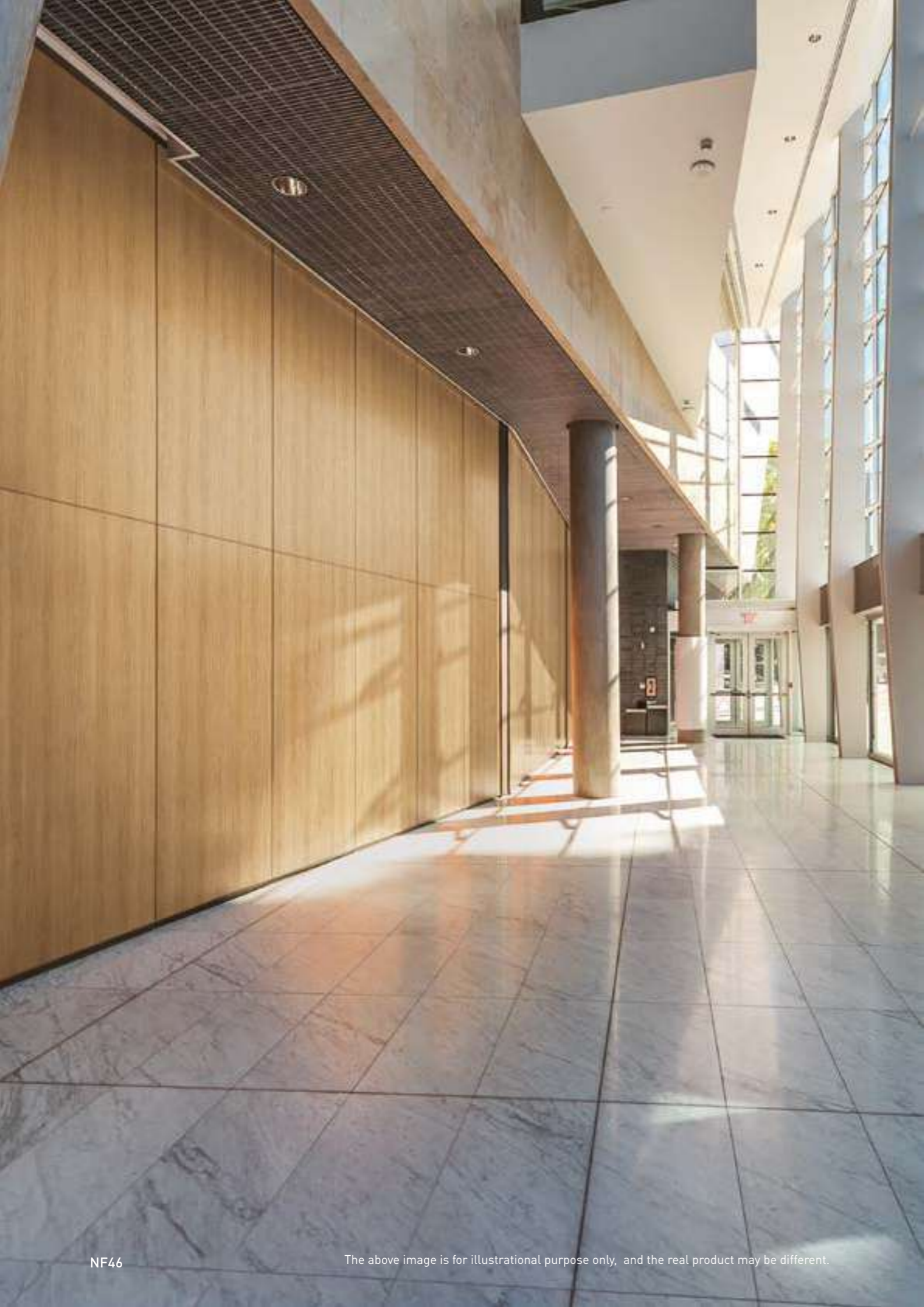
The above image is for illustrational purpose only, and the real product may be different.



🚫 NF45



✅ NF44



Origin Wood



✓ NF46



⊗ NF47

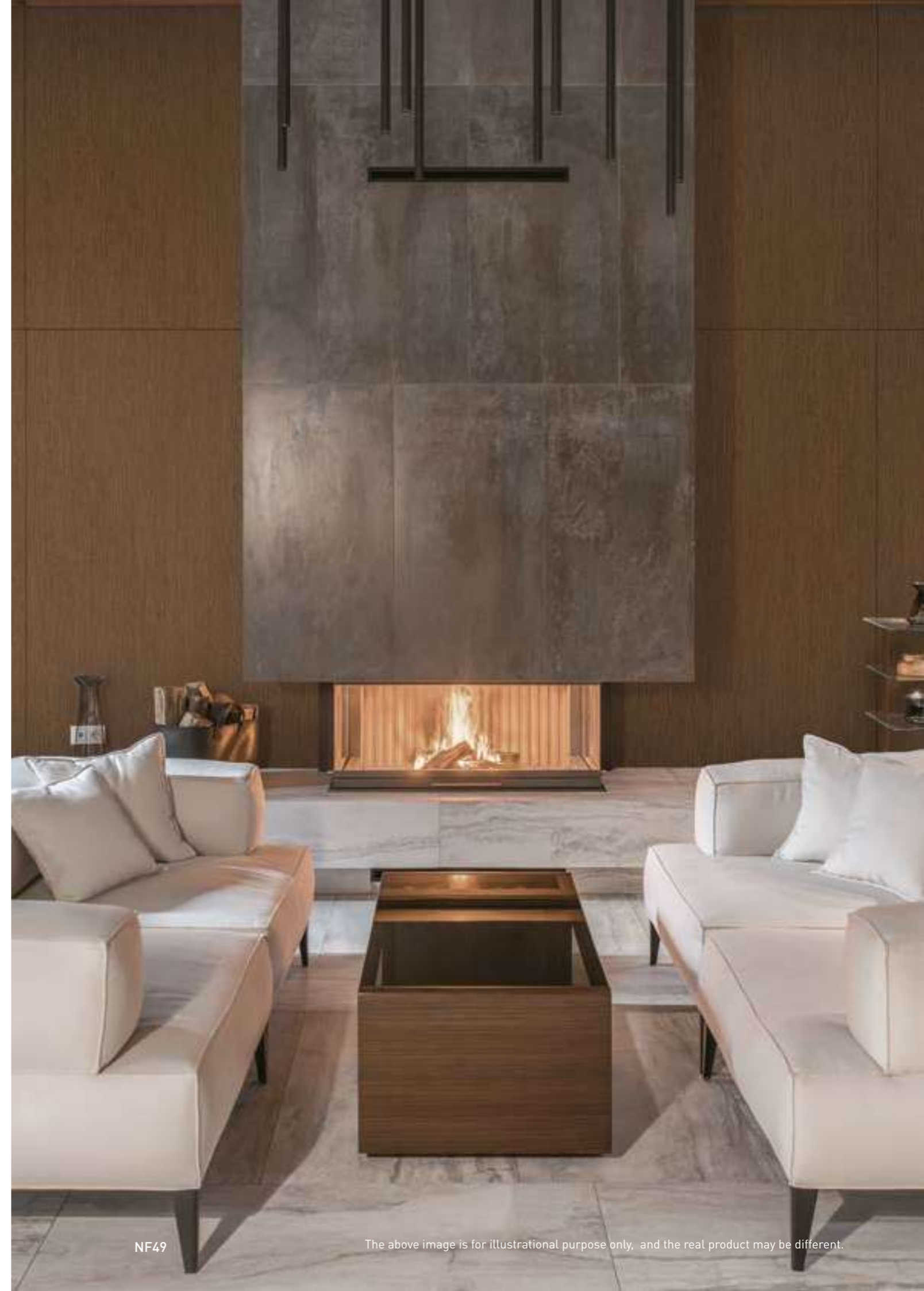
Origin Wood



⊘ NF48



✓ NF49



NF49

The above image is for illustrational purpose only, and the real product may be different.

Origin Wood



🕒 NF50



🕒 NF51



🕒 NF52



NF50

The above image is for illustrational purpose only, and the real product may be different.

Origin Wood



🚫 NF53



🚫 NF54



NF53 | NF54

The above image is for illustrational purpose only, and the real product may be different.



NF55 | NF56

The above image is for illustrational purpose only, and the real product may be different.



✅ NF55



✅ NF56

Suede Wood



⊙ AZ06



✓ AZ07



✓ B50



⊙ AZ10



⊙ AZ02



⊙ AZ03



⊙ AZ01



⊙ AZ04

Premium Wood



⊘ AF07



⊘ AF02



⊘ AF09



✓ AF03



✓ AF08



AF08

The above image is for illustrational purpose only, and the real product may be different.



⊘ AF05



⊘ AF06



✓ AF10



⊘ AF01



AF10

The above image is for illustrational purpose only, and the real product may be different.

Rich Wood



✓ NF57



⌚ NF58



⌚ NF59



⌚ NF60



⌚ NF64



⌚ NF62



⌚ NF63

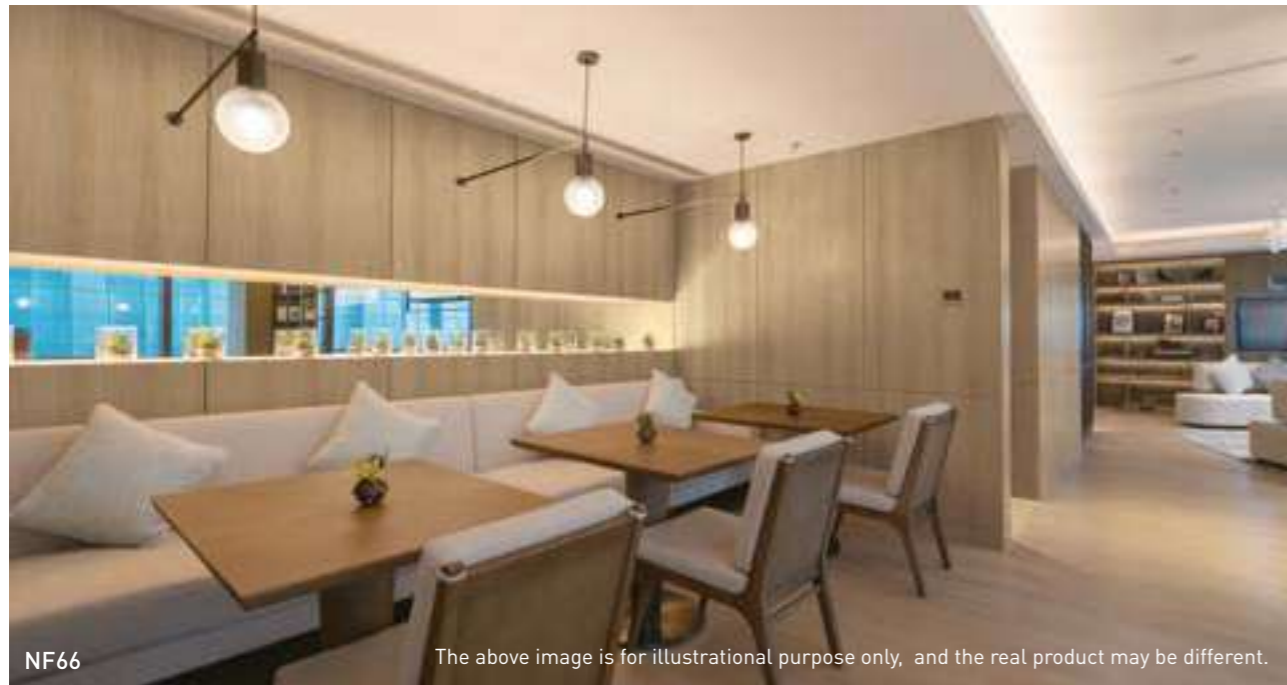


✓ F4



⌚ NF61

Rich Wood



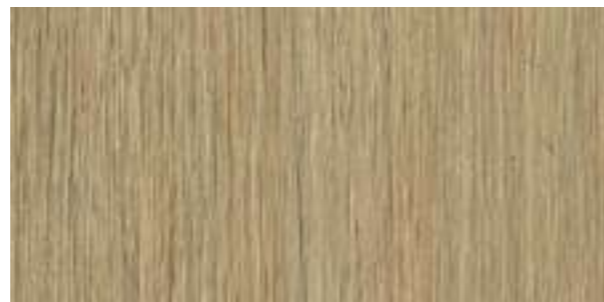
⌚ AA17



⌚ AA01



⌚ AA13



✓ NF66



✓ B8



⌚ NF65



⌚ AA04



⌚ NF67



⌚ AA11



⌚ AA02



✓ F5



⌚ AA05



Rich Wood



Ⓞ AA09



✓ AA14



Ⓞ AA06



✓ AA12



Ⓞ NF68



✓ NF70



✓ B9



Ⓞ AA08



Ⓞ NF69



Ⓞ NF71

Rich Wood



✓ AL29



⊗ AG01



⊗ AG07



⊗ AG13



⊗ AL10



⊗ AL23



✓ AG20



⊗ AL36



⊗ AL30



⊗ NF72



⊗ AL08



⊗ AG02



⊗ AG08



✓ AG14



⊗ AL26



AG11

Rich Wood



NF73 The above image is for illustrational purpose only, and the real product may be different.



⌚ NF75



⌚ NF76



⌚ NF73



⌚ AG21



⌚ NF74



✓ AL24



⌚ AG17



⌚ AG09



⌚ AT03



⌚ NF77



⌚ AG18



✓ NF78



NF78 The above image is for illustrational purpose only, and the real product may be different.

Rich Wood



🕒 NF80



🕒 AG15



🕒 AG16



🕒 AL28



🕒 NF79



✅ B4



🕒 AT05



🕒 AG10



🕒 AL12



✅ AT04



🕒 NF82



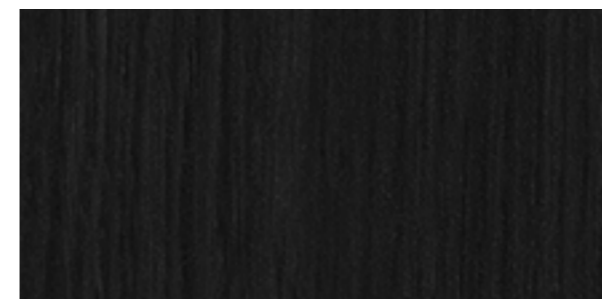
🕒 NF81



🕒 AL25



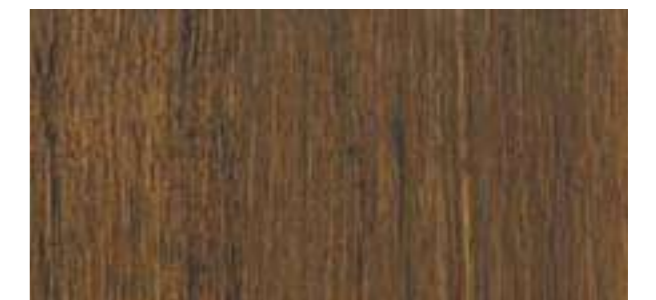
✅ E50



✅ F7



E50
The above image is for illustrational purpose only, and the real product may be different.



🕒 AT02



🕒 AT06

Design Wood



NF83

The above image is for illustrational purpose only, and the real product may be different.



✓ D4



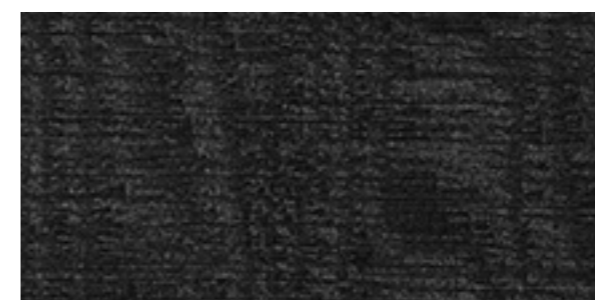
✓ H4



✓ NF83



⊗ NF84



✓ T50



D4

The above image is for illustrational purpose only, and the real product may be different.

Standard Wood



⊘ CT91



⊘ CT73



✓ NE63



⊘ CT18



⊘ CT74



⊘ NF85



⊘ CT102



⊘ CT19



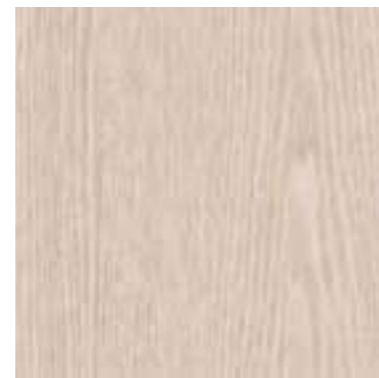
⊘ CT13



⊘ NF86



⊘ CT95



✓ CT17



⊘ NE66



⊘ CT76



✓ NE61

Standard Wood



⌚ NF87



⌚ CT20



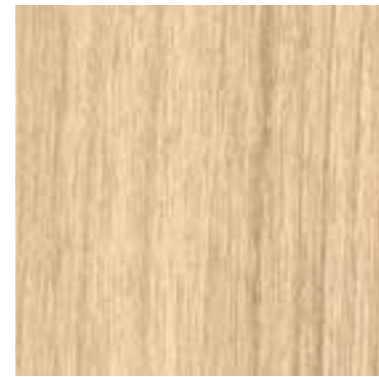
⌚ NE64



⌚ CT28



✓ NE57



⌚ NE65



NF88

The above image is for illustrational purpose only, and the real product may be different.



⌚ CT33



⌚ NF88



⌚ CT49



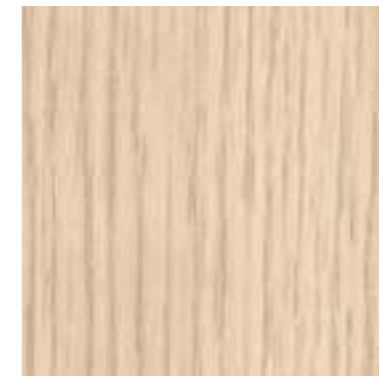
⌚ CT100



⌚ CT92



⌚ CT101



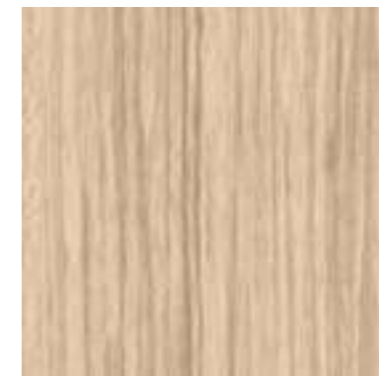
⌚ CT94



⌚ CT93



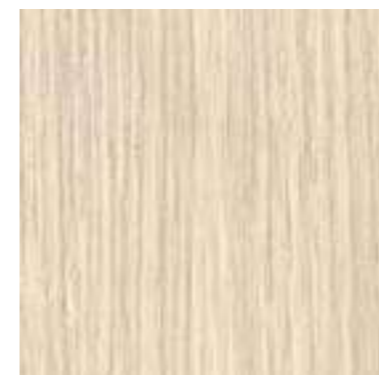
⌚ CT90



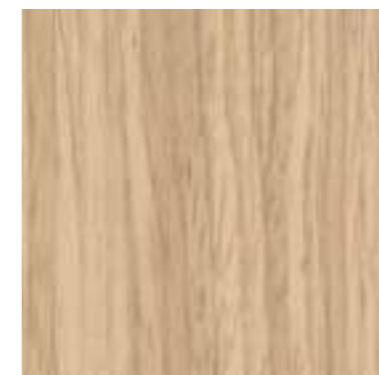
⌚ CT40



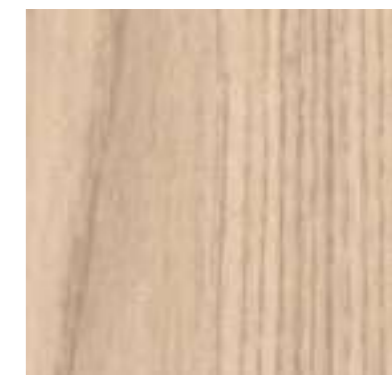
⌚ CT14



⌚ CT79



⌚ CT62



⌚ NE67

Standard Wood



⊘ CT46



⊘ NF89



⊘ CT48



⊘ CT77



✓ B3



✓ CT82



The above image is for illustrational purpose only, and the real product may be different.



⊘ CT96



⊘ CT01



⊘ CT41



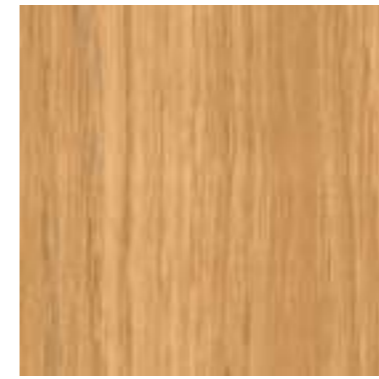
⊘ NF90



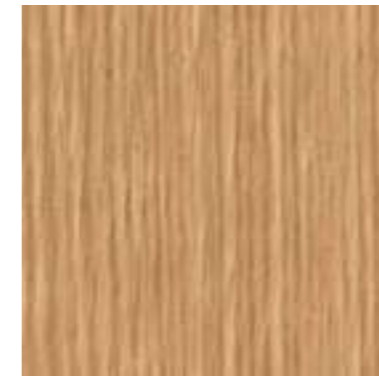
⊘ CT97



✓ I14



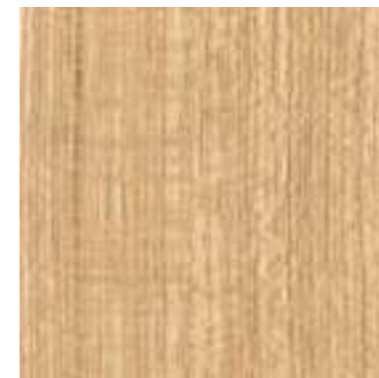
⊘ CT75



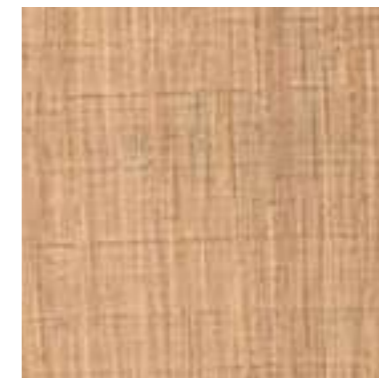
⊘ CT53



⊘ CT87



⊘ CT45



⊘ CT16



⊘ CT98

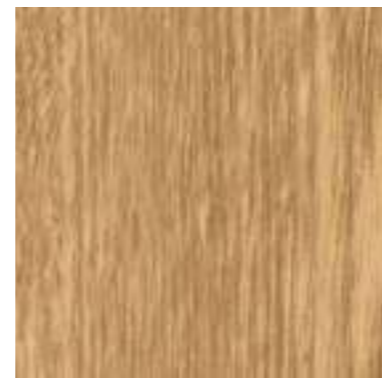
Standard Wood



✓ NE68



⊗ NF91



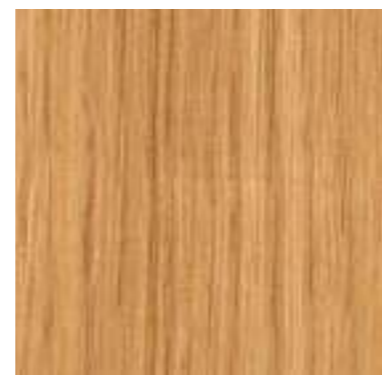
⊗ CT37



⊗ CT06



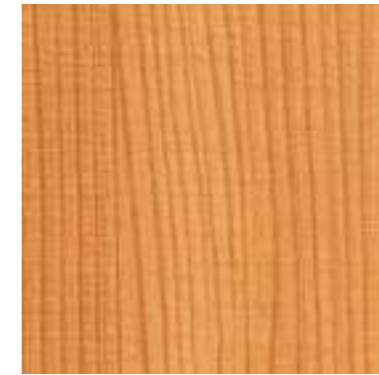
⊗ CT78



⊗ CT99



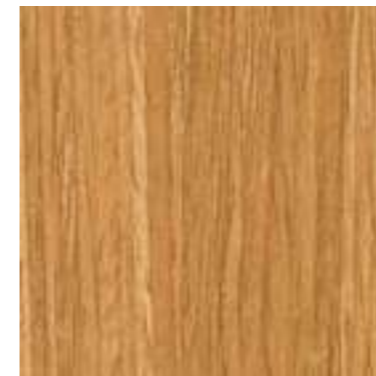
⊗ CT70



⊗ CT11



⊗ CT71



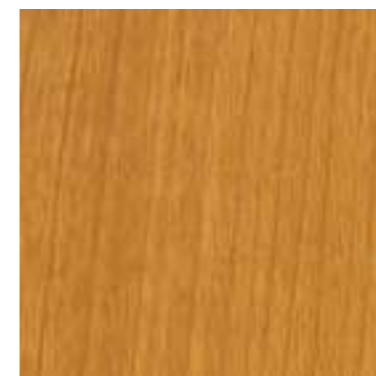
⊗ CT44



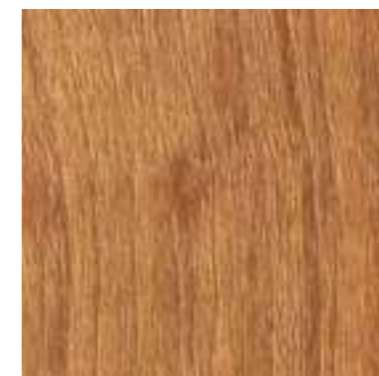
⊗ CT22



✓ B5



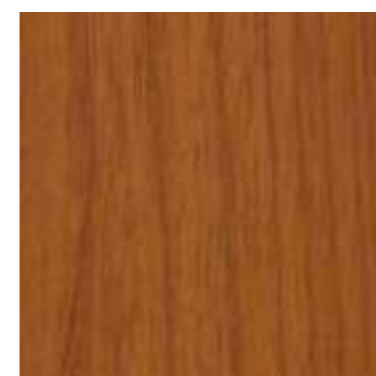
⊗ CT54



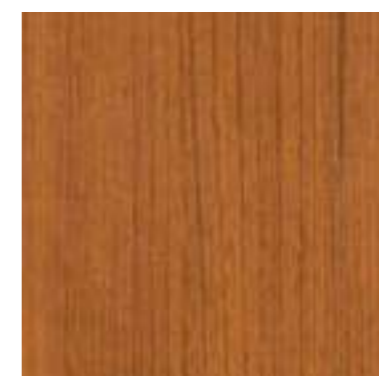
⊗ CT05



✓ B1



⊗ CT09



⊗ CT43

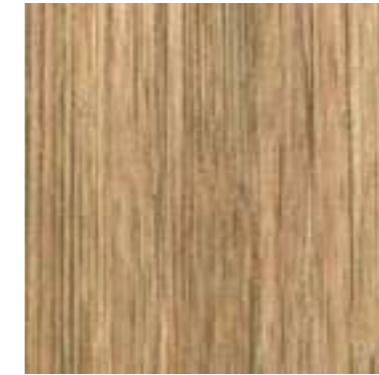


⊗ CT08

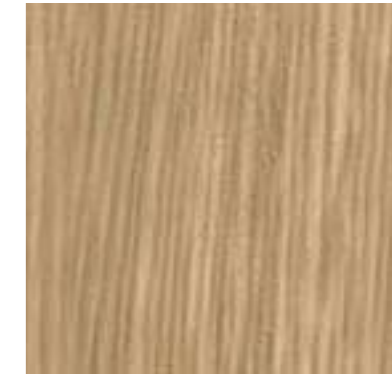
Standard Wood



CT84



CT27



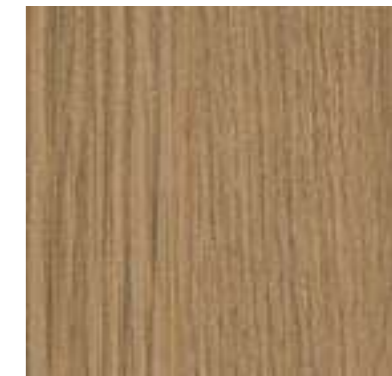
CT15



NF96



CT35



CT80



NF94



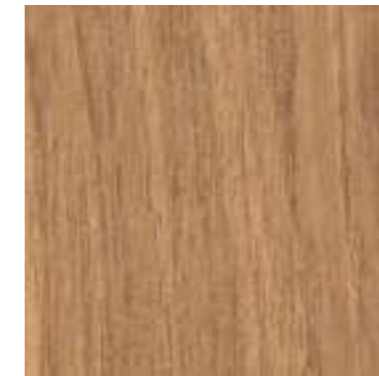
NF92



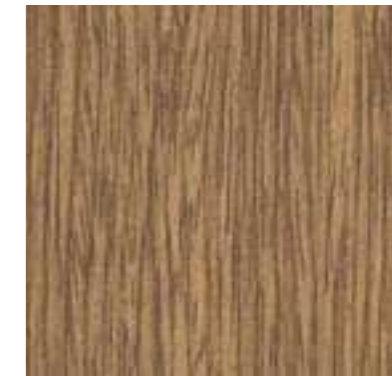
CT42



NF95



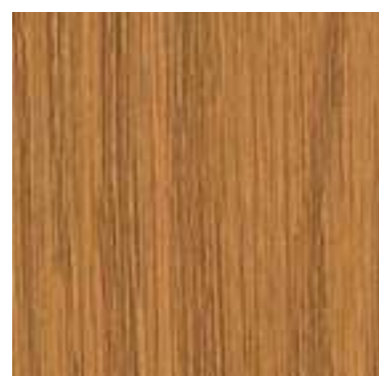
CT36



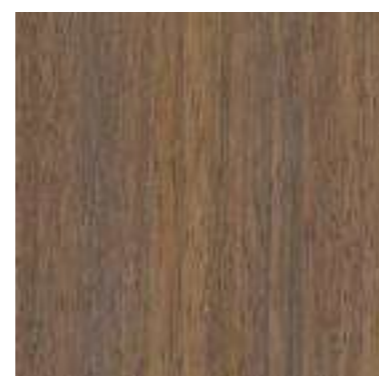
CT60



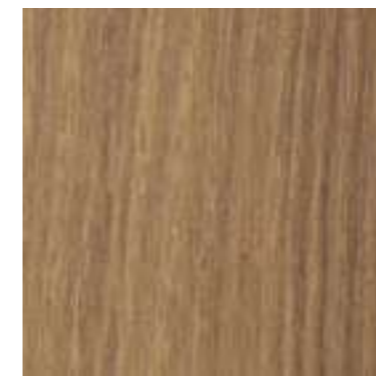
CT02



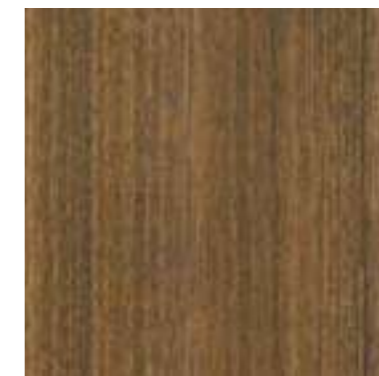
CT10



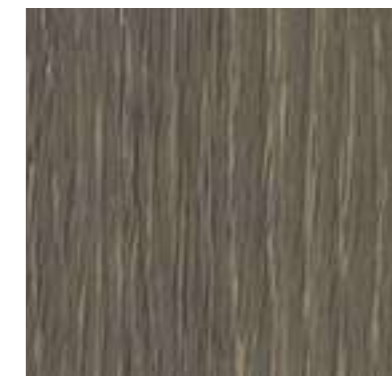
NF93



CT88



CT56



CT69

Standard Wood



🕒 CT21



🕒 NE62



🕒 CT25



🕒 CT29



🕒 CT57



✅ E4



🕒 A4



🕒 CT89



🕒 CT24



🕒 CT67



✅ F6



✅ D1



🕒 CT26



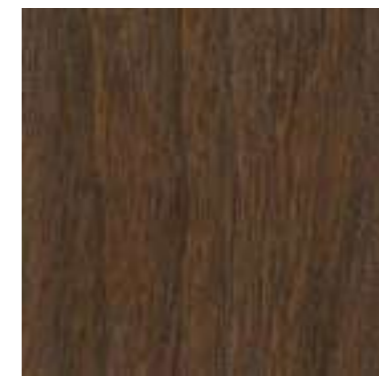
🕒 CT68



✅ A1



🕒 CT55



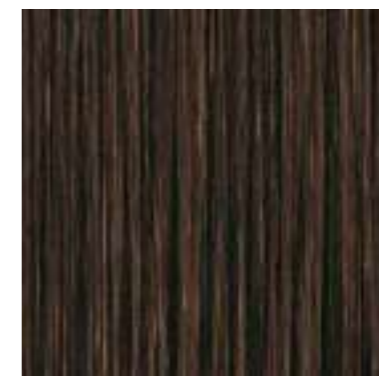
🕒 CT66



🕒 CT59



🕒 CT50



🕒 CT52



✅ H5



🕒 CT04



🕒 CT61



✅ CT58



03

Our Marble range gives a chic touch to all your renovations thanks to its super-realistic graining designs. Dark, grey or white, matt or ash... In small touches or in an all-over look, you are spoiled by choice for renovations with a stamp of luxury. Imagine a matt white work surface or a bathroom with ash black splash back...Discover the sumptuous models that will give your establishment an impressive decorative upgrade.

Stone & Marble



NF98

Fine patterns and colours that will lead to new trends

Premium Marble



NF98

The above image is for illustrational purpose only, and the real product may be different.



🚫 NF97



✅ NF98

Premium Marble



NE69

The above image is for illustrational purpose only, and the real product may be different.

✓ NE69



NE70

The above image is for illustrational purpose only, and the real product may be different.

✓ NE70

Premium Marble



⊘ NG01



⊘ NE71



✓ NF99



NF99

The above image is for illustrational purpose only, and the real product may be different.

Marble



✓ NE31

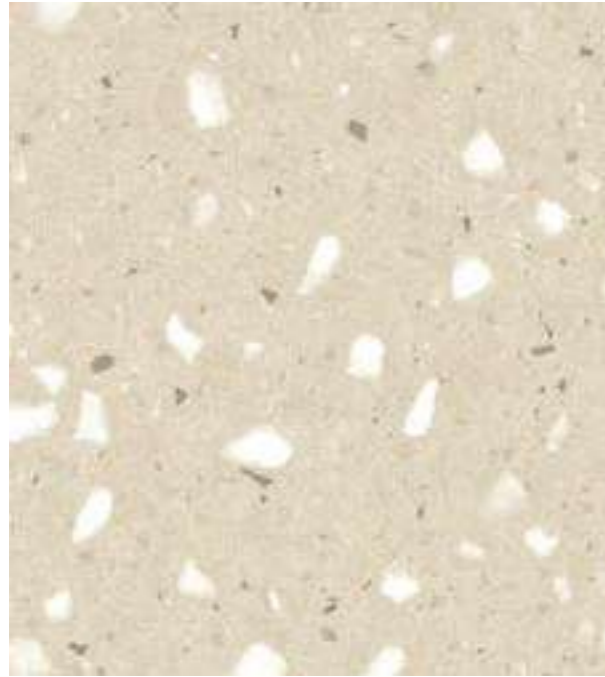


⊘ NE32

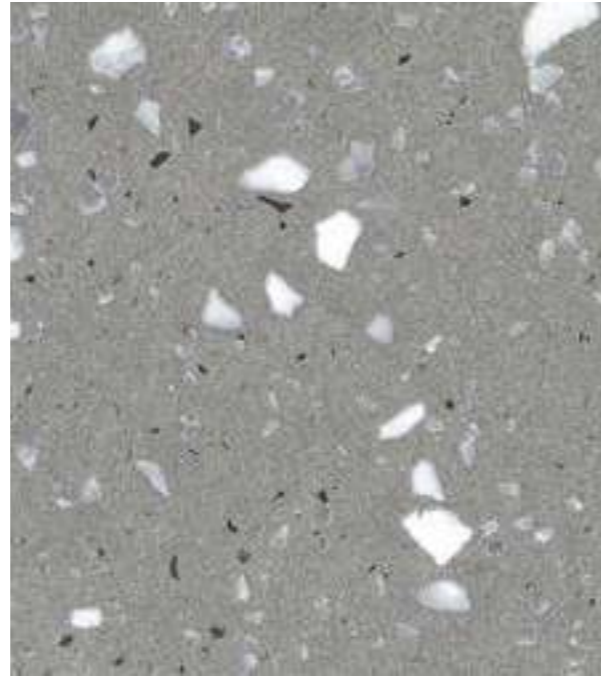


NE31

Stone & Marble



Ⓞ NG03



✓ NG02



NG02

The above image is for illustrational purpose only, and the real product may be different.



NG04

The above image is for illustrational purpose only, and the real product may be different.

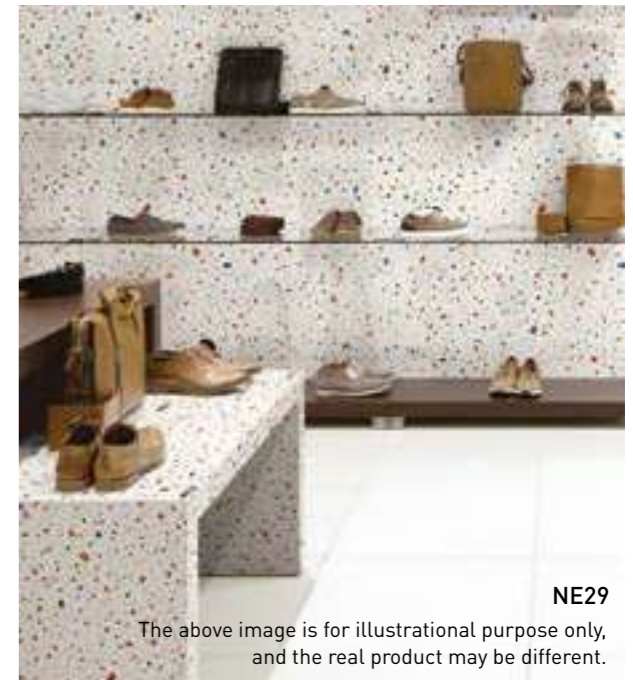
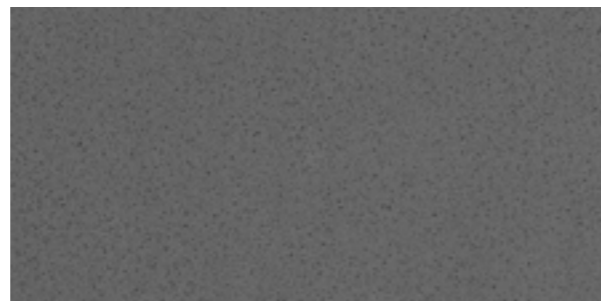
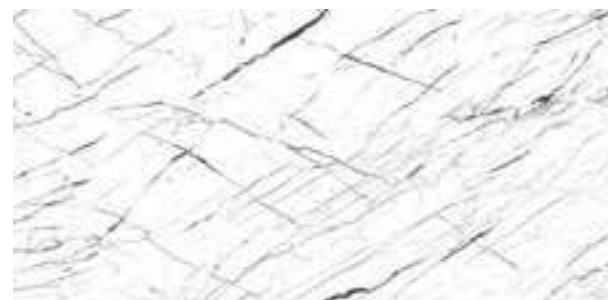


✓ NG04



Ⓞ NG05

Stone & Marble

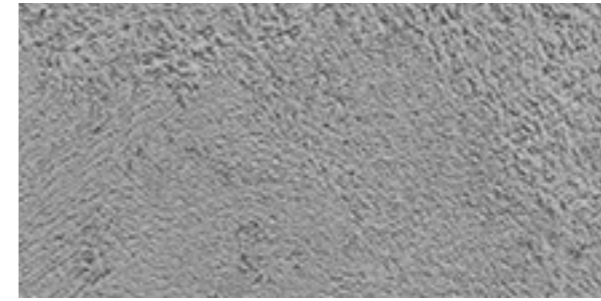


Stone

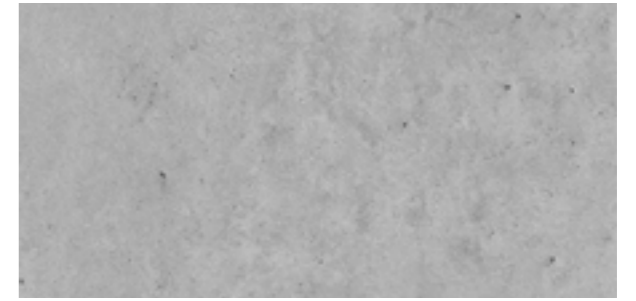


NE24 | NE26

The above image is for illustrational purpose only, and the real product may be different.



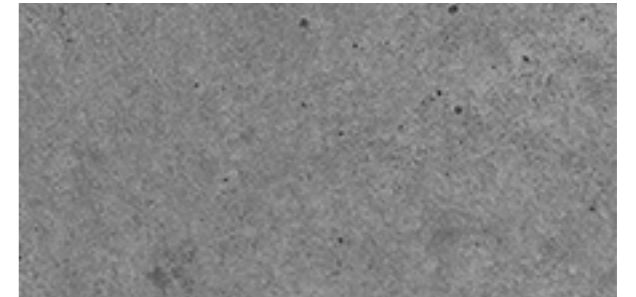
✓ NE24



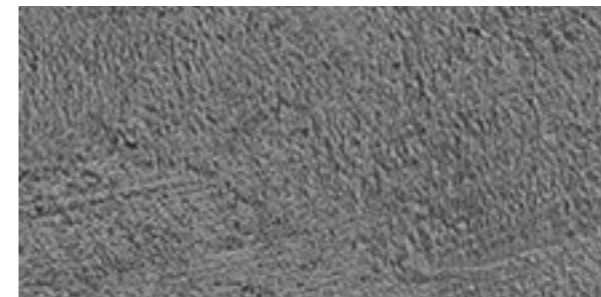
✓ U19



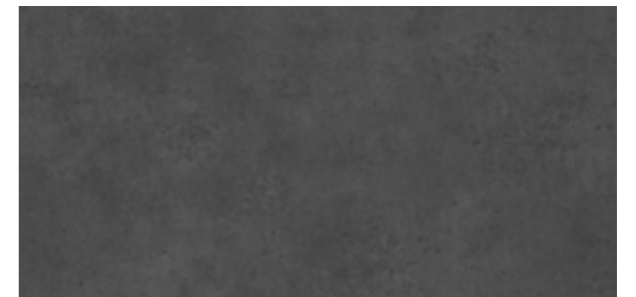
⊘ NE25



✓ U21



✓ NE26



✓ U20



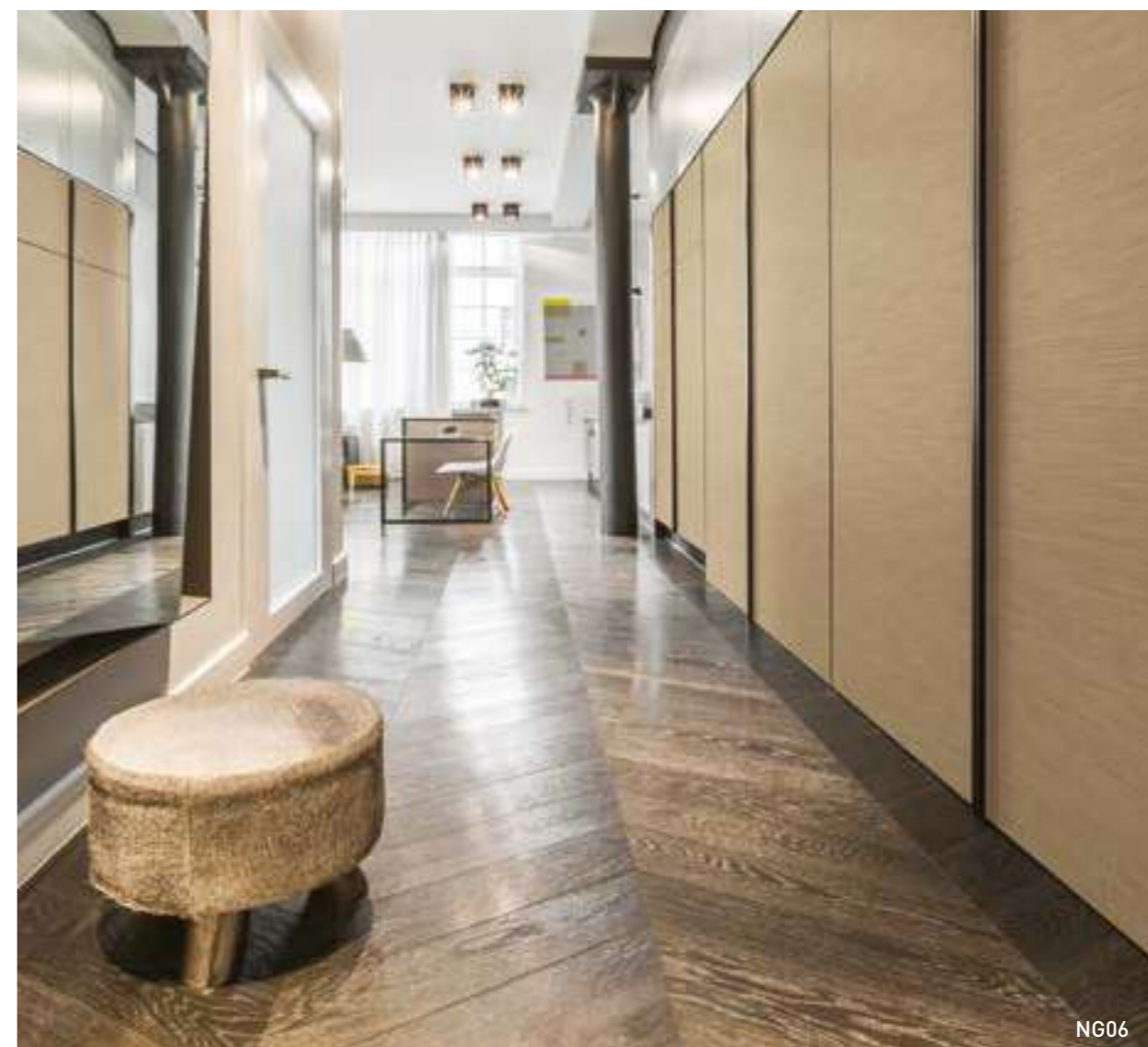
U19

The above image is for illustrational purpose only, and the real product may be different.

04

Unique materials and colours await you in our Textile range. Ideal for creating a modern but unstructured look! Attract the eye and stir emotions in a bedroom or a dining room thanks to the hypnotic textures of the highly numerous models of the range. As in fashion, textile in décor is a matter of good taste and toning.

Natural Surface



NG06

Unique and luxurious texture

Real Fabric

This product, made by a weaving method of weaving PVC yarns one by one into weft and warp yarns, has natural texture and durability unique to fabric.



✓ NG11



✓ NE74



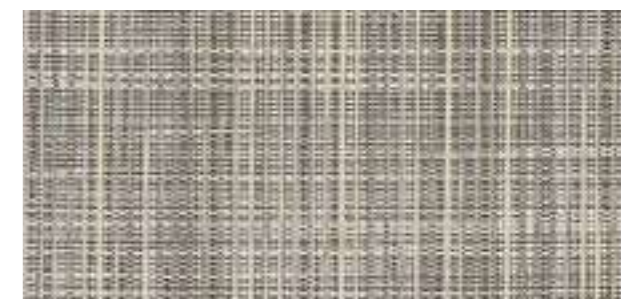
✓ NG10



⊗ NG06



✓ NG07



⊗ NG08



⊗ NG09



✓ NE73



Fabric



NG13

The above image is for illustrational purpose only, and the real product may be different.



⊗ NG12



✓ MK18



✓ NG13



⊗ MK19



NE37

The above image is for illustrational purpose only, and the real product may be different.



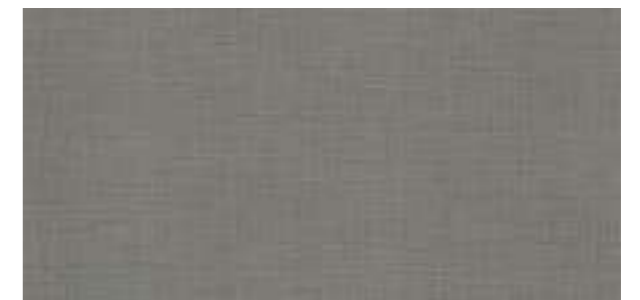
✓ ST02



✓ NE38



⊗ NE36



✓ NE37



✓ NE33

Deep Emboss Leather



✓ NE43



✓ NG19



✓ NE42



⊘ NG18



✓ NE41



✓ NG17



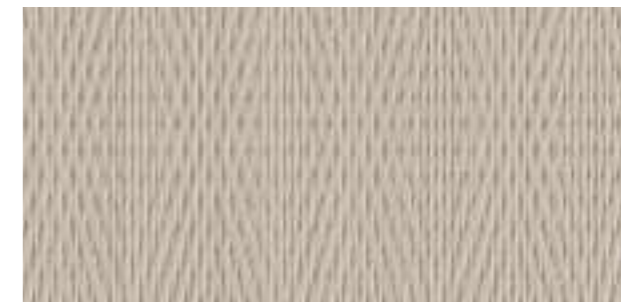
✓ NG23



✓ NG20



⊘ NG22



⊘ NG21





W6

The above image is for illustrational purpose only, and the real product may be different.



U19

The above image is for illustrational purpose only, and the real product may be different.

Real Metal



NE47 | NE49

The above image is for illustrational purpose only, and the real product may be different.



ND03



ND04



ND07



✓ NE51



✓ NE47



ND01



✓ Q50



ND02



✓ NE48



✓ NE49



ND05

Metal



⊗ NG29



✓ NG28



NG28

The above image is for illustrational purpose only, and the real product may be different.



AL15

The above image is for illustrational purpose only, and the real product may be different.



✓ AL11



⊗ AL13



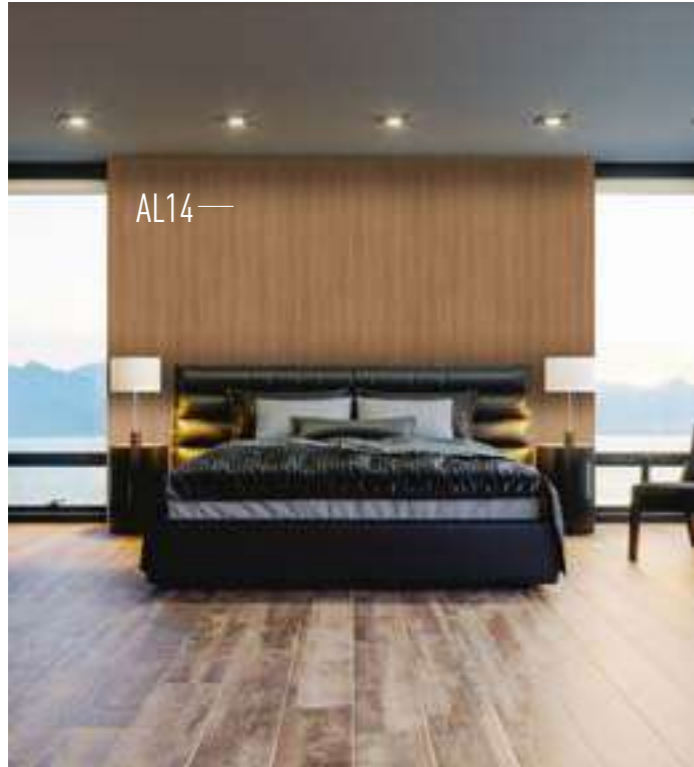
✓ AL15



⊗ AL17



⊗ AL07



✓ AA15



✓ AL14



✓ NE13



✓ B6



✓ G6



✓ I10



✓ G0



✓ H10



✓ H50



✓ I7



✓ I9



✓ I11

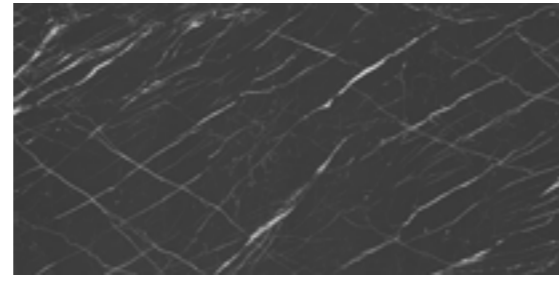




✓NG31



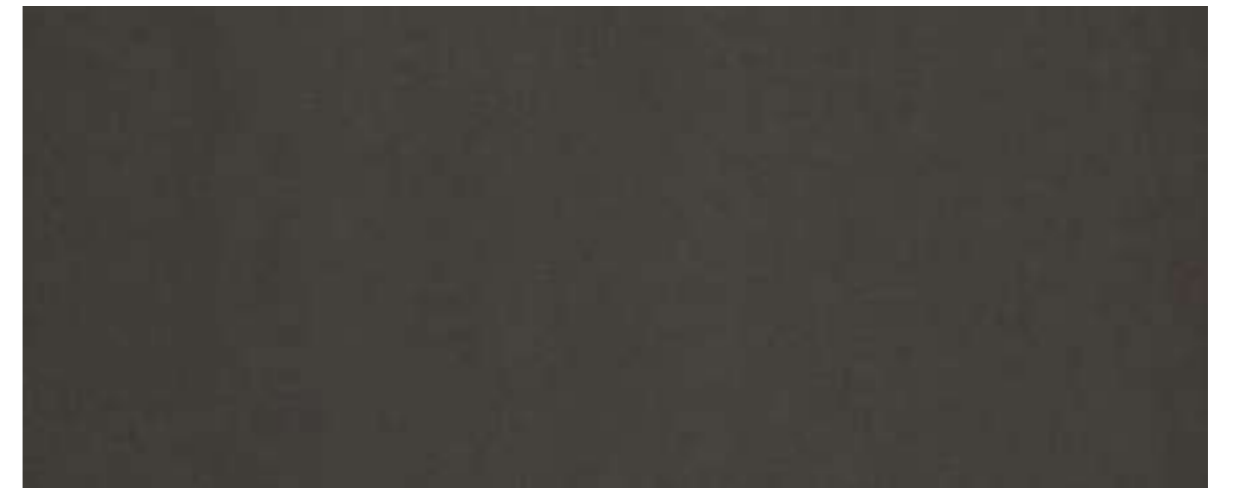
✓MK13



✓MK14



X6



✓NE40



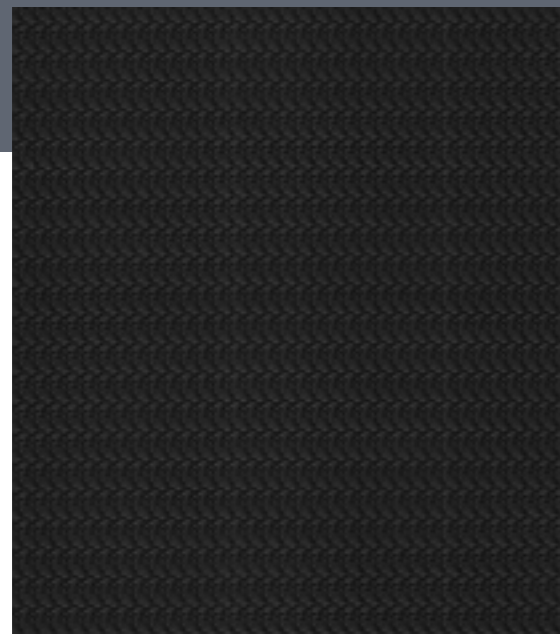
NE40



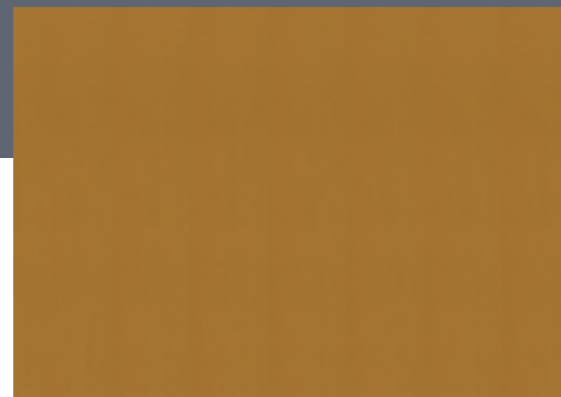
✓X6



✓X51



✓ Z2



✓ Q3



✓ AL09



✓ T10



✓ T12



✓ K2



✓ 02



✓ 07

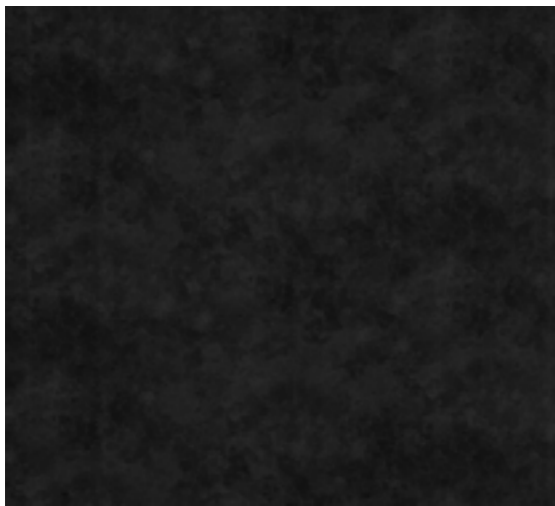


✓ L50





✓W6



✓U10



✓W7



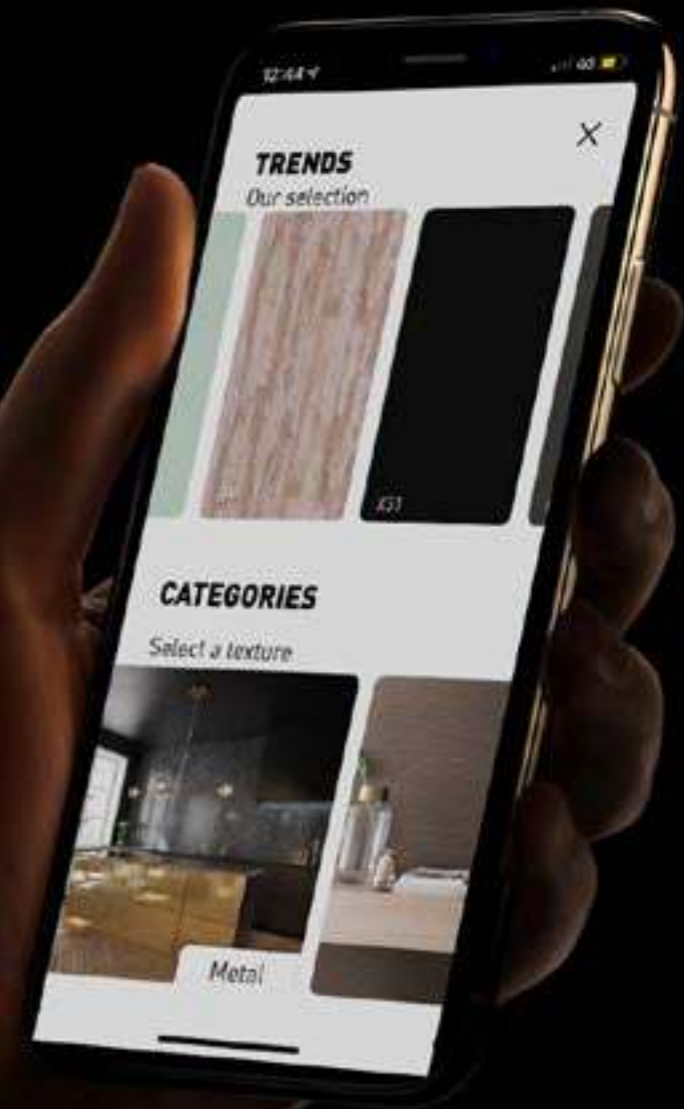
✓W8



✓W9



DOWNLOAD OUR APPLICATION





MK18

The above image is for illustrational purpose only, and the real product may be different.



RM30

The above image is for illustrational purpose only, and the real product may be different.



COVER STYL'
SMART INTERIOR DESIGN

WHY REPLACE? WHEN YOU CAN UPGRADE!

Cover Styl' is a cost effective self-adhesive vinyl that can cover almost every surface in no time and this with many genuine patterns.

Cover Styl' est un film adhésif qui permet de recouvrir la plupart des surfaces en un temps record, pour un moindre coût. Des textures plus vraies que nature.



Cover Styl' ist eine kostengünstige, selbstklebende Vinyl Folie. Erhältlich in vielen verschiedenen Designs, Sie können damit in kürzester Zeit fast jede Oberfläche neugestalten.

Cover Styl' es un vinilo autoadhesivo rentable que puede cubrir todas las superficies en poco tiempo y esto con muchos patrones genuinos.

Cover Styl' è un vinile autoadesivo a basso costo che può coprire ogni superficie in pochissimo tempo con molti modelli originali.



SUMMARY

SOMMAIRE - INHALTSVERZEICHNIS - SOMMARIO - RIASSUNTO

WOOD	4 - 7
MARBLE	8 - 9
SOLID COLOUR	10 - 11
SOFT TOUCH	12
METALLIC	13
NATURAL STONE	14 - 15
FABRIC	16 - 17
GLITTER	18 - 19
LEATHER	20 - 21
CASE STUDIES	22 - 49
BEFORE - AFTER	50 - 69
TRAINING	70 - 71

WOOD

BOIS - HOLZ - MADERA - LEGNI



J2



H5



T50



J18



NE46



I10



F7



E4



A1



D1



D4



B9



I11



AA12



AA14



I7



E50



CT58



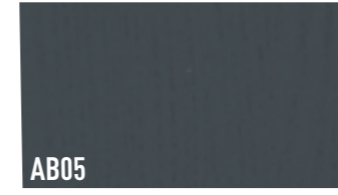
F6



NF56



NF49



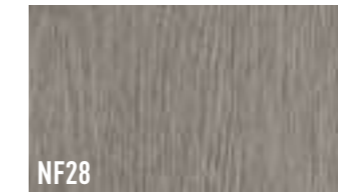
AB05



CT69



NF83



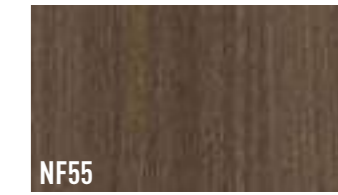
NF28



G6



AA15



NF55



H4



NF83



AT04



AF10



AL14



B5



F5



I14



NE68



CT35



AF08



NF70

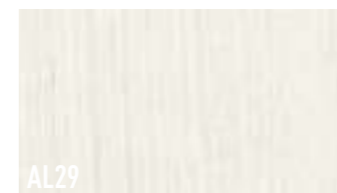
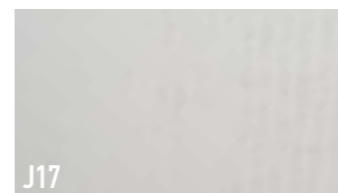


F4



WOOD

BOIS - HOLZ - MADERA - LEGNI



MARBLE

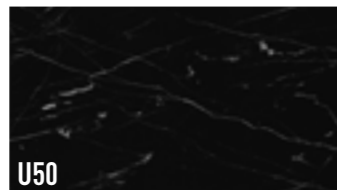
MARBRE - MARMOR - MÁRMOL - MARM



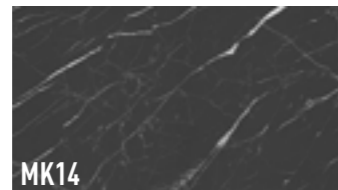
NG31



U50



U50



MK14



NF98



NE69



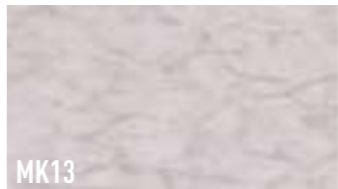
KN02



NF99



NE70



MK13



NE31



NE72



NG31



NG04

SOLID COLOUR

COULEUR UNIE - UNI-FARBEN - COLORE SÓLIDO - COLORI UNITI



SOFT TOUCH



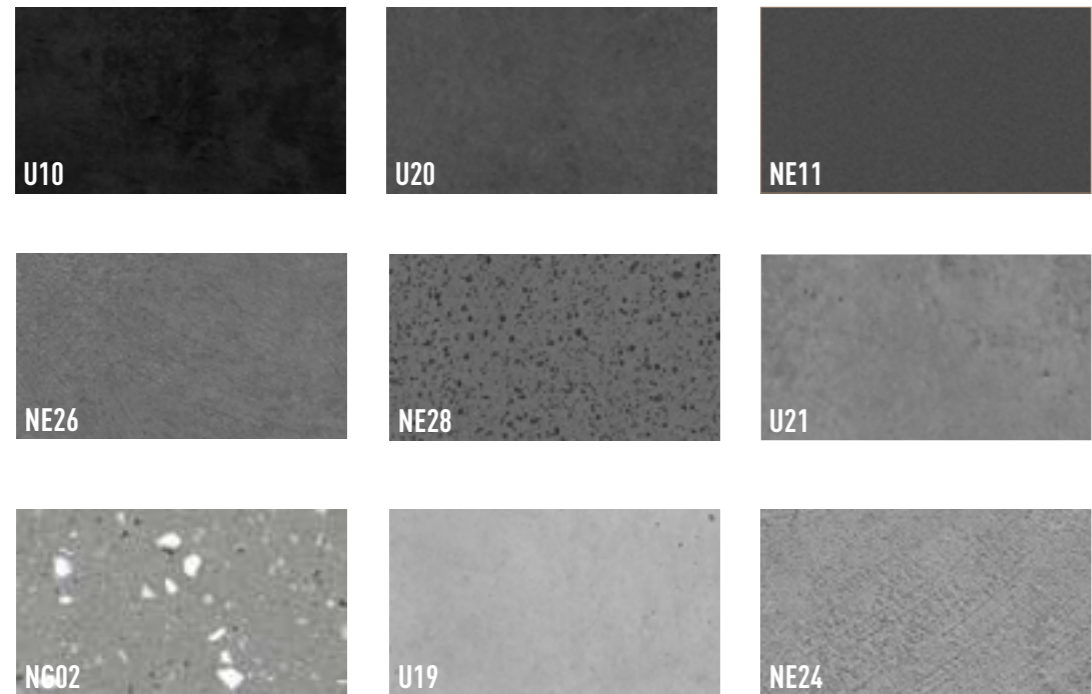
METALLIC

MÉTALLISÉS - METALLISCH - METALIZADOS - METALLI



NATURAL STONE

PIERRE NATURELLE - NATURSTEIN - PIEDRA NATURALA - PIEDRE NATURALI



FABRIC

TEXTILE - STOFF - TEXTILE - TESSUTI



NE37



NE73



NE33



T12



NE37



T10



AL09



NE33



NG10



NE38



MK18



NG13



NG07



NG10



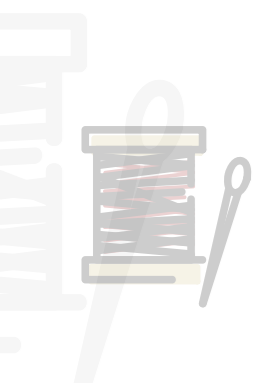
NG11



NE74

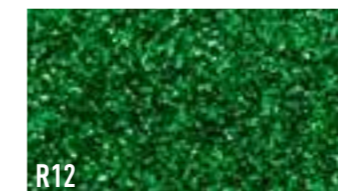
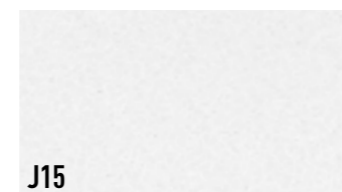
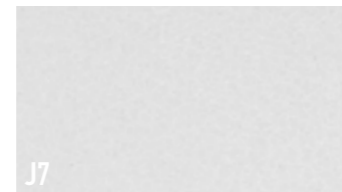
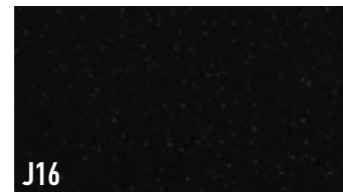


ST02



GLITTER

PAILLETÉ - GLITZER - PURPURINA - GLITTER



LEATHER

CUIR - LEDER - PIEL - PELLİ



X51



X6



NE40



NE41



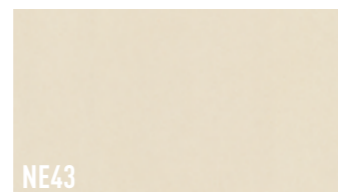
NG17



NE42



NG20



NE43



NG19



NG23



X51



NE40

NE42



CASE STUDIES

RÉALISATIONS - FALLSTUDIEN - ESTUDIOS DE CASO - ESEMPI

HOTELS	24 - 33
RESTAURANTS	34 - 35
CAFÉS	36 - 37
SHOPS	38 - 39
POINT OF SALES	40 - 45
TRANSPORT	46 - 49



HOTEL

HÔTEL - HOTEL - HOTEL - ALBERGO



Club Med 
CLUB MED - PORTUGAL



B4 - WOOD



L2 - SOLID COLOUR



110 —

HOTEL

HÔTEL - HOTEL - HOTEL - ALBERGO



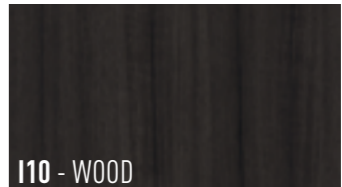
111 —



110 —



MARIOTT - PARIS - FRANCE



I10 - WOOD



I11 - WOOD



HOTEL

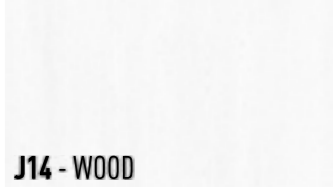
HÔTEL - HOTEL - HOTEL - ALBERGO



KN HOTEL - FUERTEVENTURA - SPAIN



G6 - WOOD

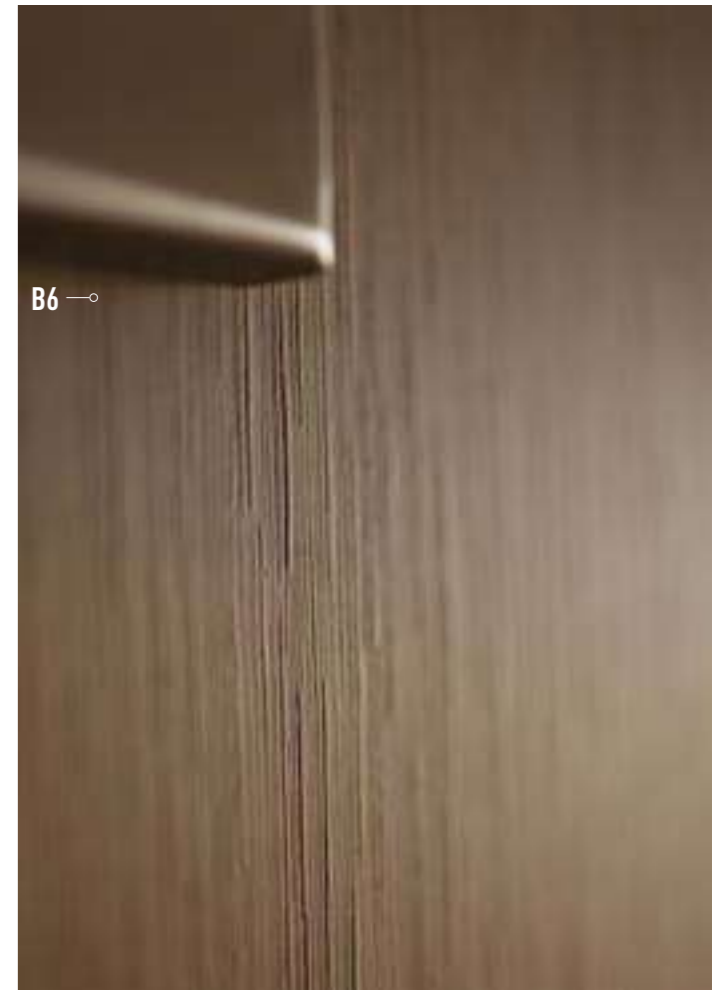


J14 - WOOD



HOTEL

HÔTEL - HOTEL - HOTEL - ALBERGO



NOVOTEL HOTEL - LE TOUQUET - FRANCE





B4

HOTEL

HÔTEL - HOTEL - HOTEL - ALBERGO



HOLIDAY INN - PARIS - FRANCE



B4



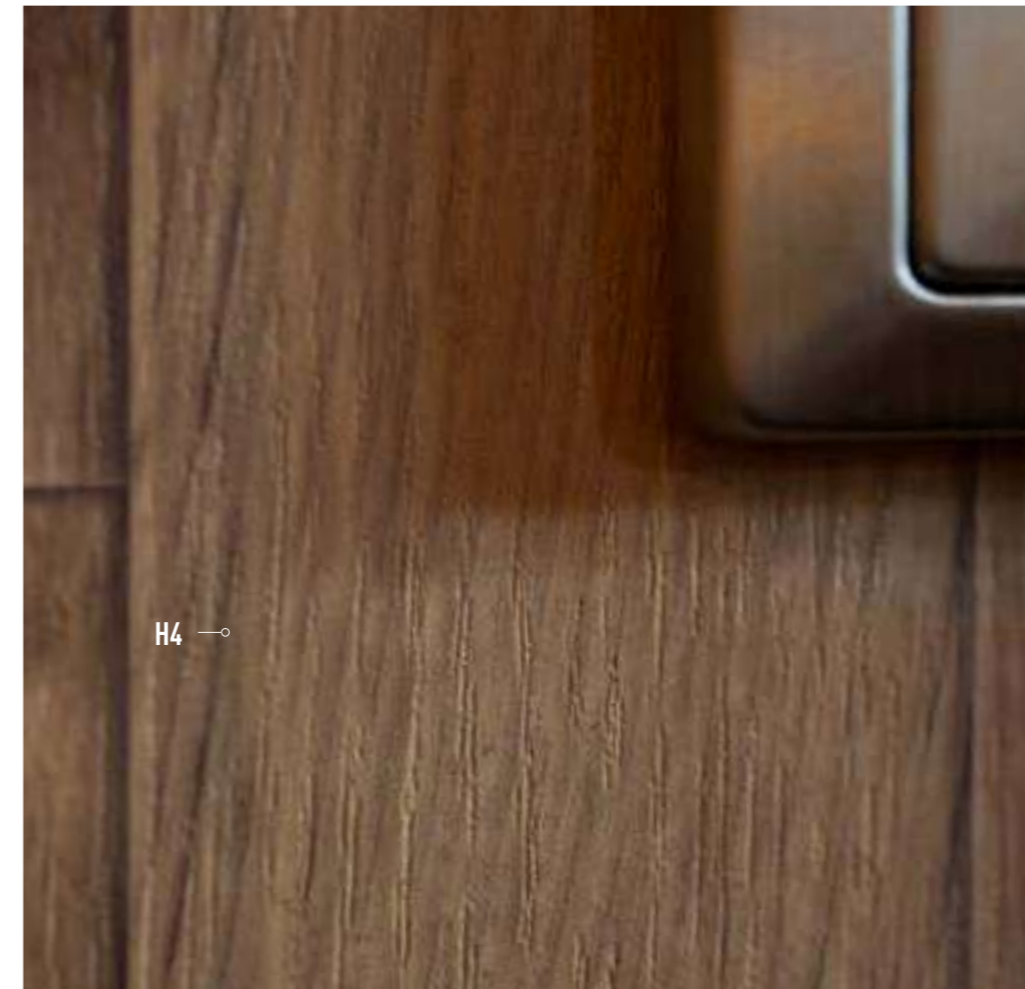
B4 - WOOD



W7

RESTAURANT

RESTAURANT - RESTAURANT - RESTAURANTE - RISTORANTE



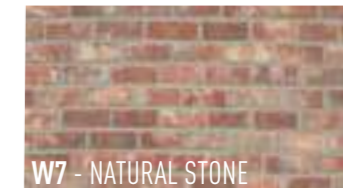
H4



W7



ALAMBRA - PARIS - FRANCE



W7 - NATURAL STONE



H4 - WOOD

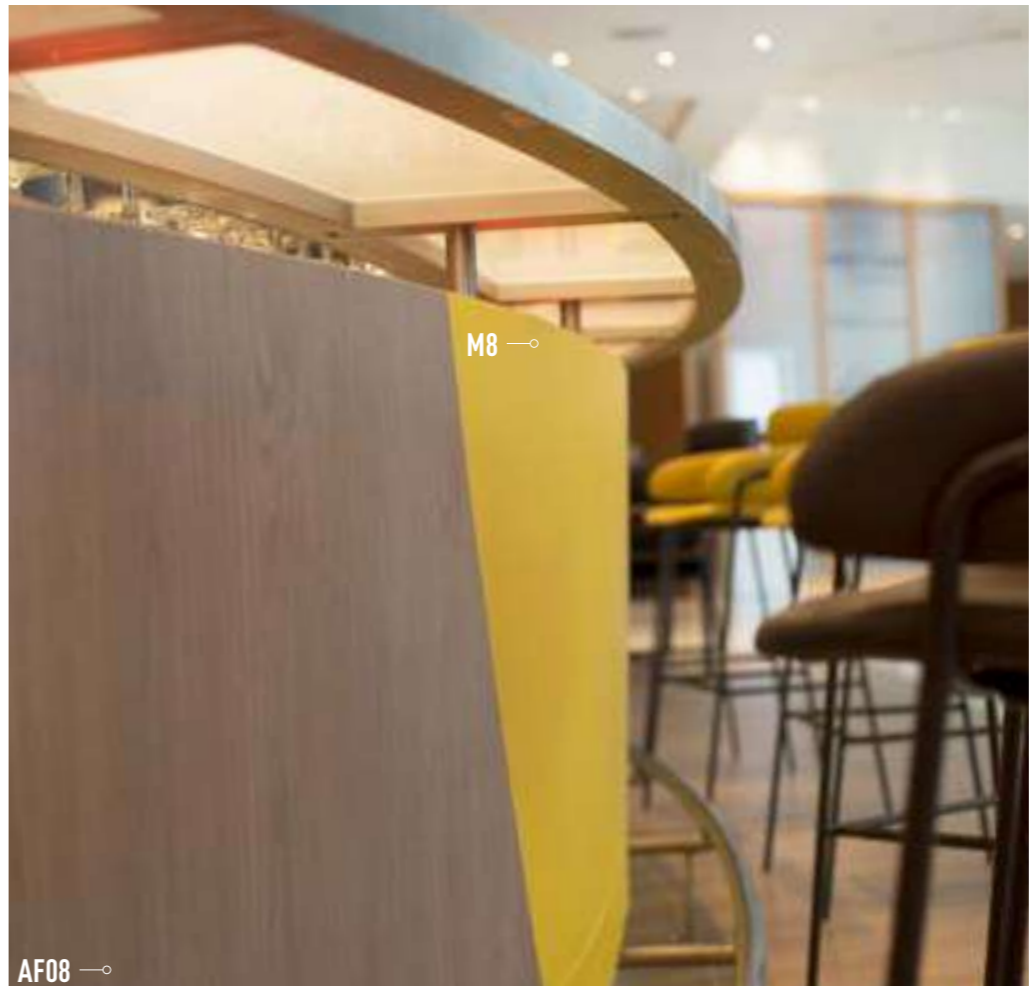


AF08

M8

CAFE

CAFÉ - CAFÉ - CAFÉ - CAFÉ



M8

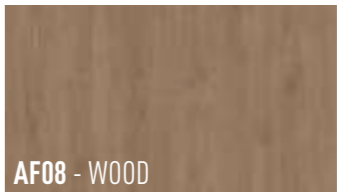
AF08



M8

NOVOTEL
HOTELS & RESORTS

NOVOTEL - PARIS - FRANCE



AF08 - WOOD



M8 - SOLID COLOUR

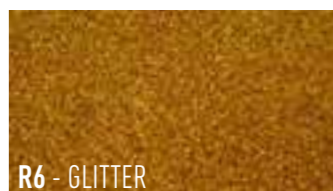
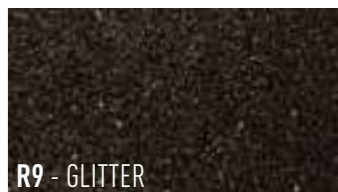
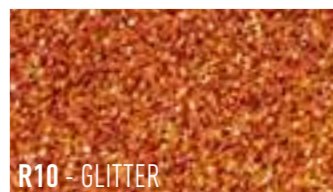


SHOP

MAGASIN - GESCHÄFT - TIENDA - NEGOZIO



FRASAL BOUTIQUE - ITALIE





POINT OF SALES

FLEURISTE - SBLUMENHÄNDLER - FLORISTA - FIORAIO



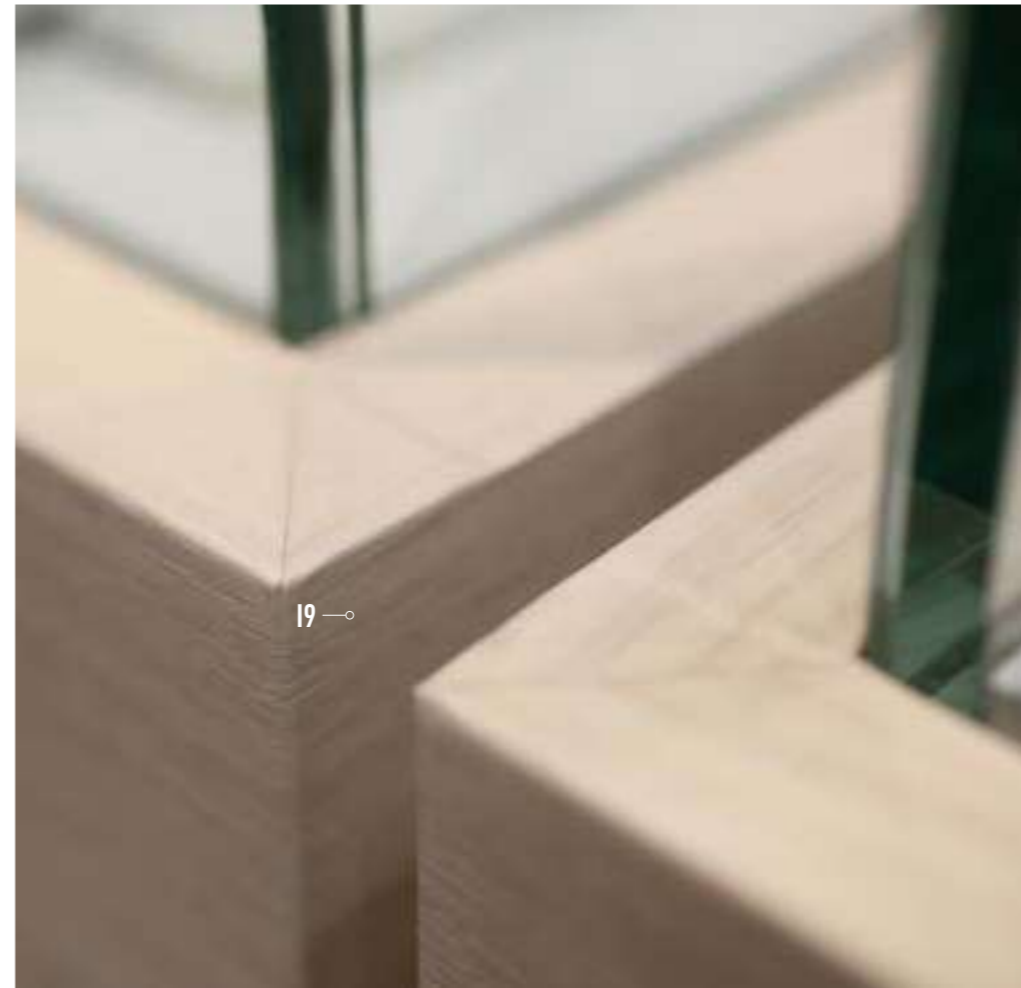
FLORIST CARREFOUR - PARIS - FRANCE





POINT OF SALES

BIJOUTERIE - SCHMUCK - JOYAS - GIOIELLERIA



JEWELRY CARREFOUR - PARIS - FRANCE



19 - WOOD



F4 —

POINT OF SALES

BOULANGERIE - BÄCKEREI - PANADERÍA - FORNO



F4 —



BAKERY CARREFOUR - PARIS - FRANCE



F4 - WOOD



TRANSPORT

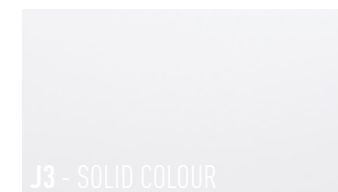
TRANSPORT - WAGEN - TRANSPORTE - TRASPORTO



BOAT - ITALY



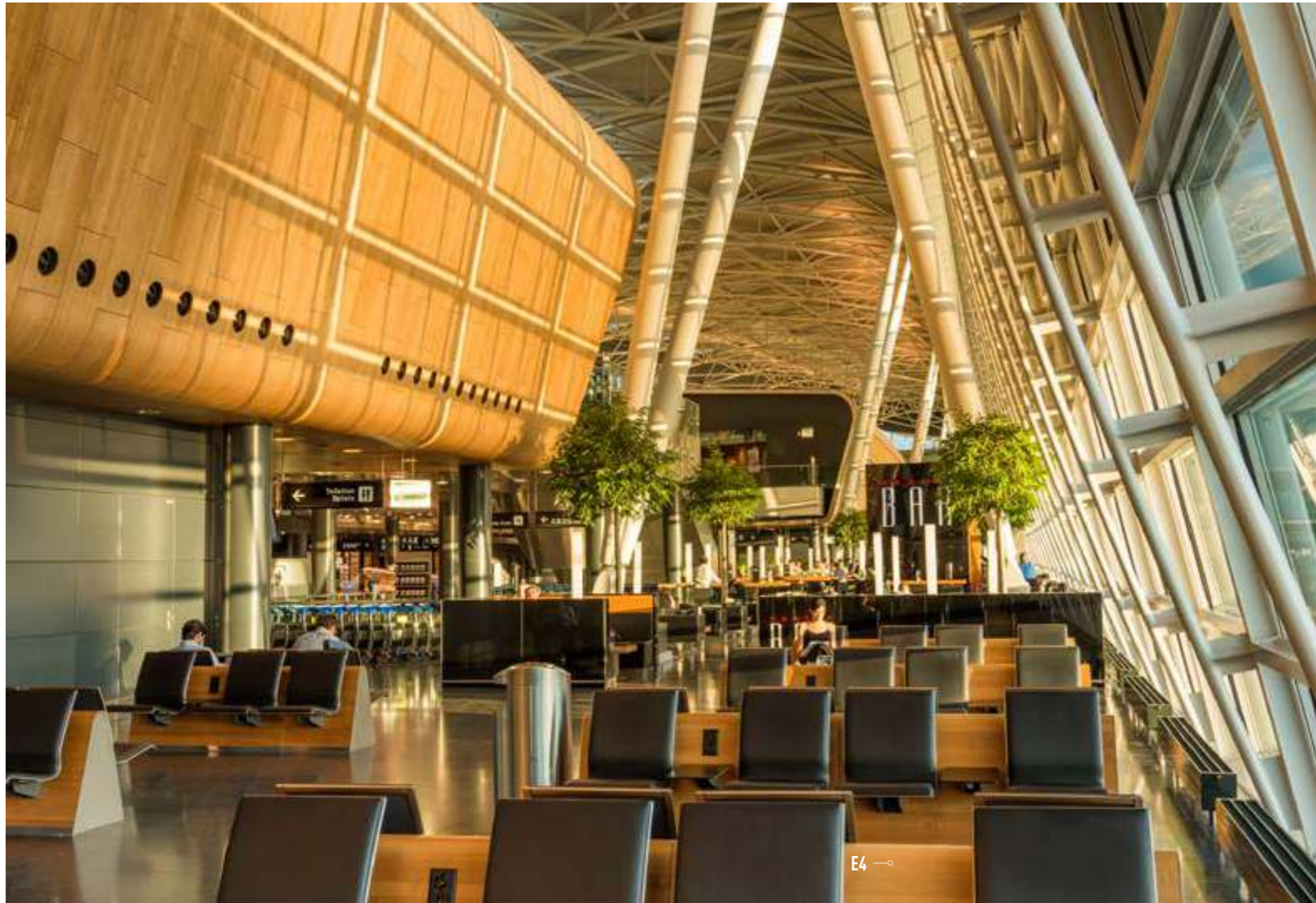
02 - SOLID COLOUR



J3 - SOLID COLOUR



B1 - WOOD



E4 —

TRANSPORT

TRANSPORT - WAGEN - TRANSPORTE - TRASPORTO



J3 —



HEADQUARTER - UNITED KINGDOM



J3 - SOLID COLOUR



E4 - WOOD



BEFORE-AFTER

AVANT-APRÈS - VORHER-NACHHER - ANTES-DESPUÈS - PRIMA-DOPO

CLUB MED	52 - 53
CARREFOUR	54 - 57
MAYORGAZO	58 - 59
PRINCESSA DE EBOLI	60 - 61
MATAS BLANCAS	62 - 63
TIM HOTEL	64 - 65
RADISSON BLU	66 - 67
STUDENT ACCOMODATIONS	68 - 69



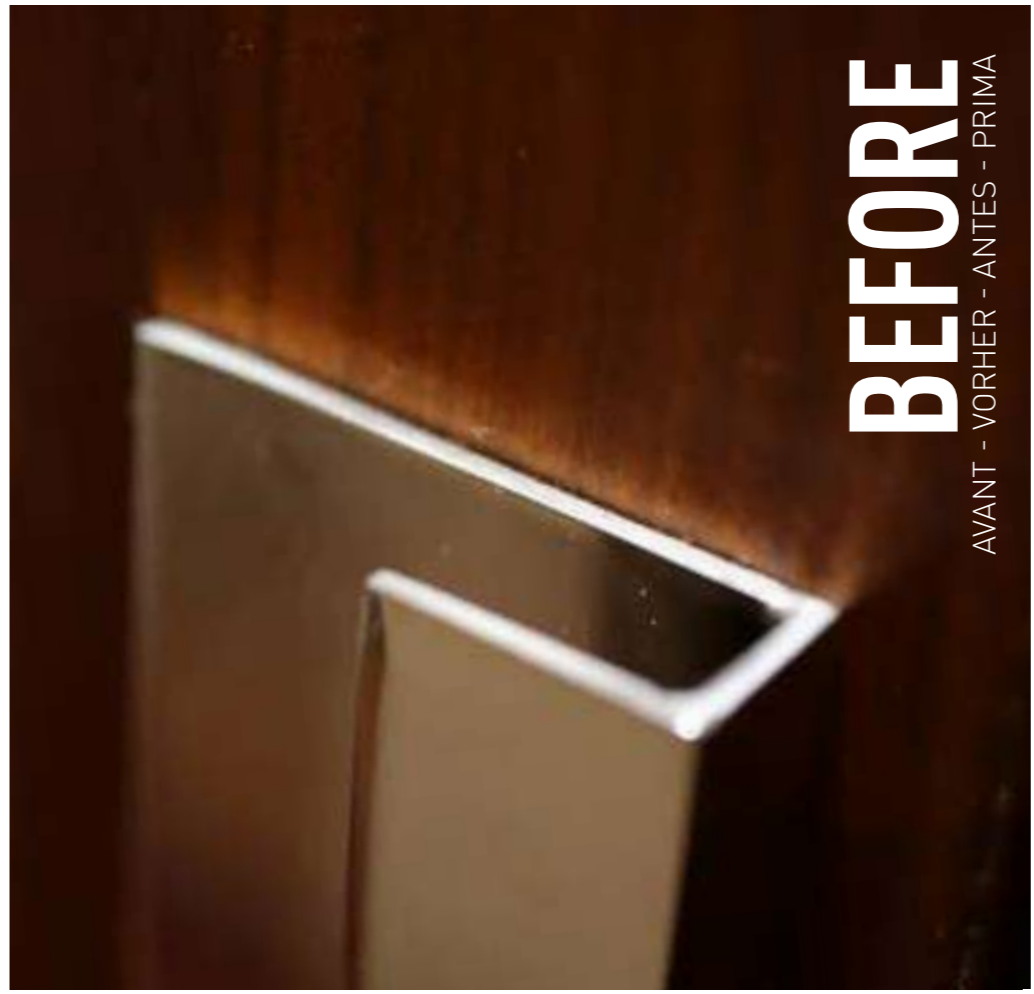
BEFORE

AVANT - VORHER - ANTES - PRIMA



AFTER

APRÈS - NACHHER - DESPUÈS - DOPO



BEFORE

AVANT - VORHER - ANTES - PRIMA



AFTER

APRÈS - NACHHER - DESPUÈS - DOPO

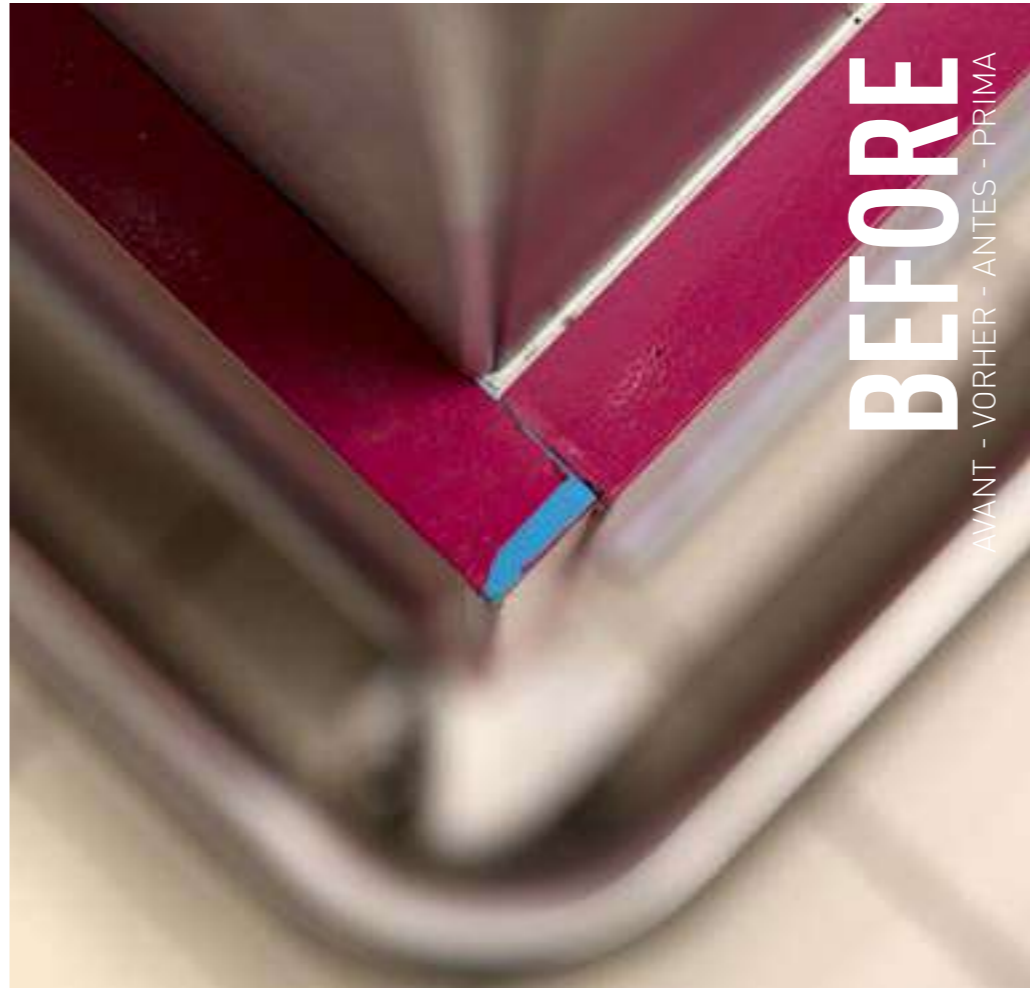


B4 - WOOD

CLUB MED
PORTUGAL



CARREFOUR
PARIS - FRANCE



CARREFOUR
PARIS - FRANCE



BEFORE

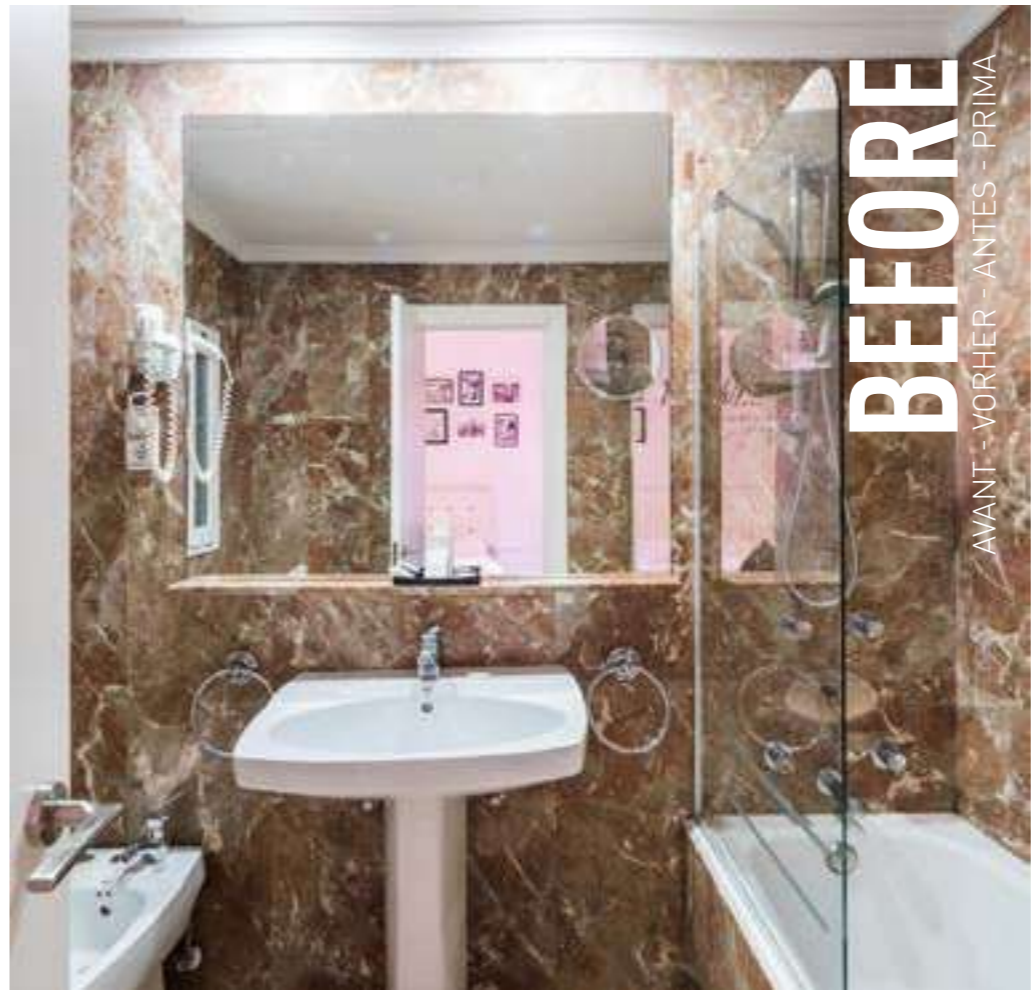
AVANT - VORHER - ANTES - PRIMA



AFTER

APRÈS - NACHHER - DESPUÈS - DOPO

NE31

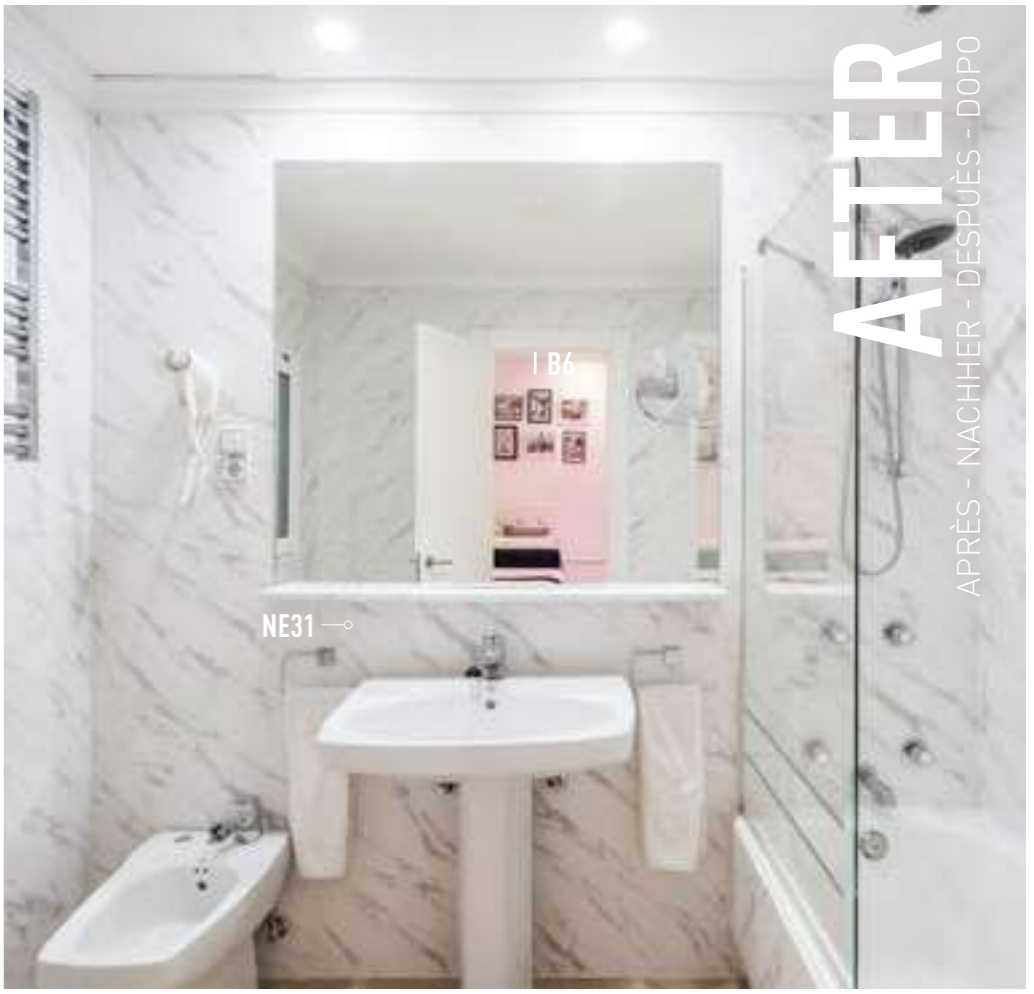


BEFORE

AVANT - VORHER - ANTES - PRIMA



NE31 - MARBLE



AFTER

APRÈS - NACHHER - DESPUÈS - DOPO

NE31

MAYORAGAZO
MADRID - SPAIN



BEFORE

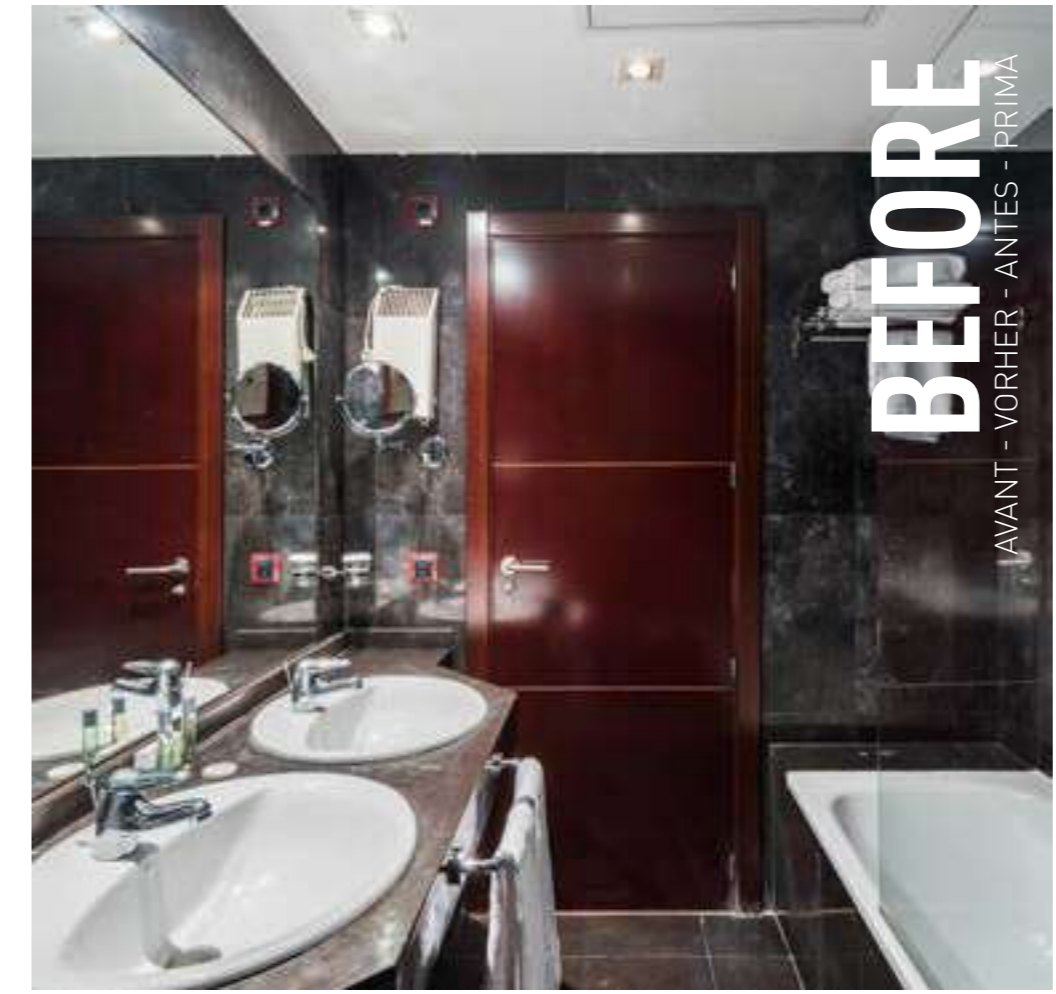
AVANT - VORHER - ANTES - PRIMA



AFTER

APRÈS - NACHHER - DESPUÈS - DOPO

NE42



BEFORE

AVANT - VORHER - ANTES - PRIMA



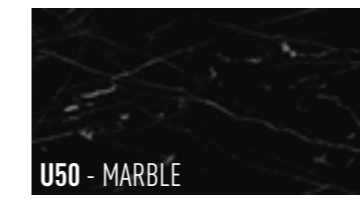
AFTER

APRÈS - NACHHER - DESPUÈS - DOPO

U50

PRINCESSA DE EBOLI

MADRID - SPAIN



U50 - MARBLÉ

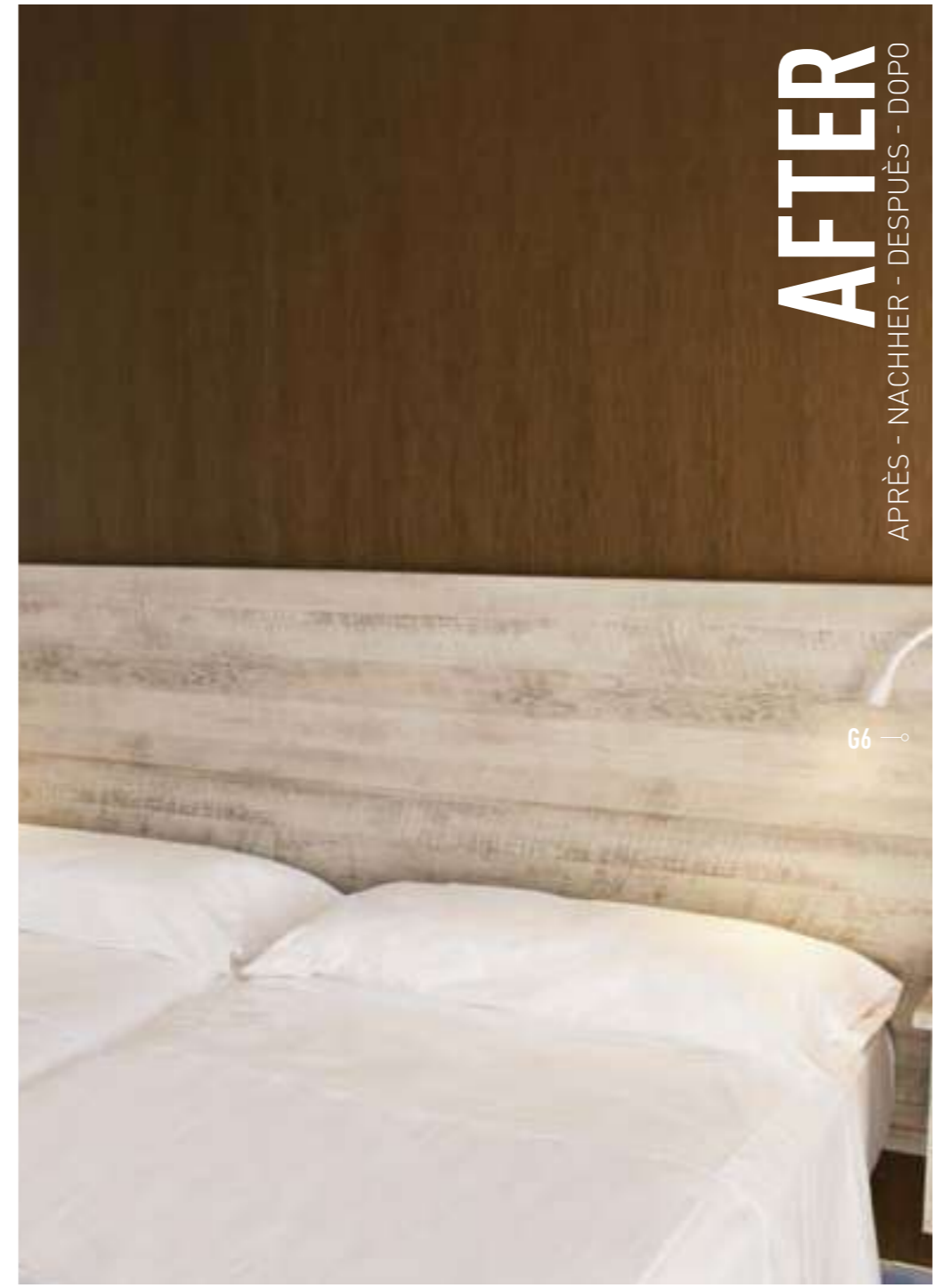


NE42 - LEATHER



BEFORE

AVANT - VORHER - ANTES - PRIMA



AFTER

APRÈS - NACHHER - DESPUÈS - DOPO



G6 - WOOD



BEFORE

AVANT - VORHER - ANTES - PRIMA



AFTER

APRÈS - NACHHER - DESPUÈS - DOPO

MATAS BLANCAS

FUERTEVENTURA - SPAIN



BEFORE

AVANT - VORHER - ANTES - PRIMA



AFTER

APRÈS - NACHHER - DESPUÈS - DOPO

F7 —



BEFORE

AVANT - VORHER - ANTES - PRIMA



F7 - WOOD

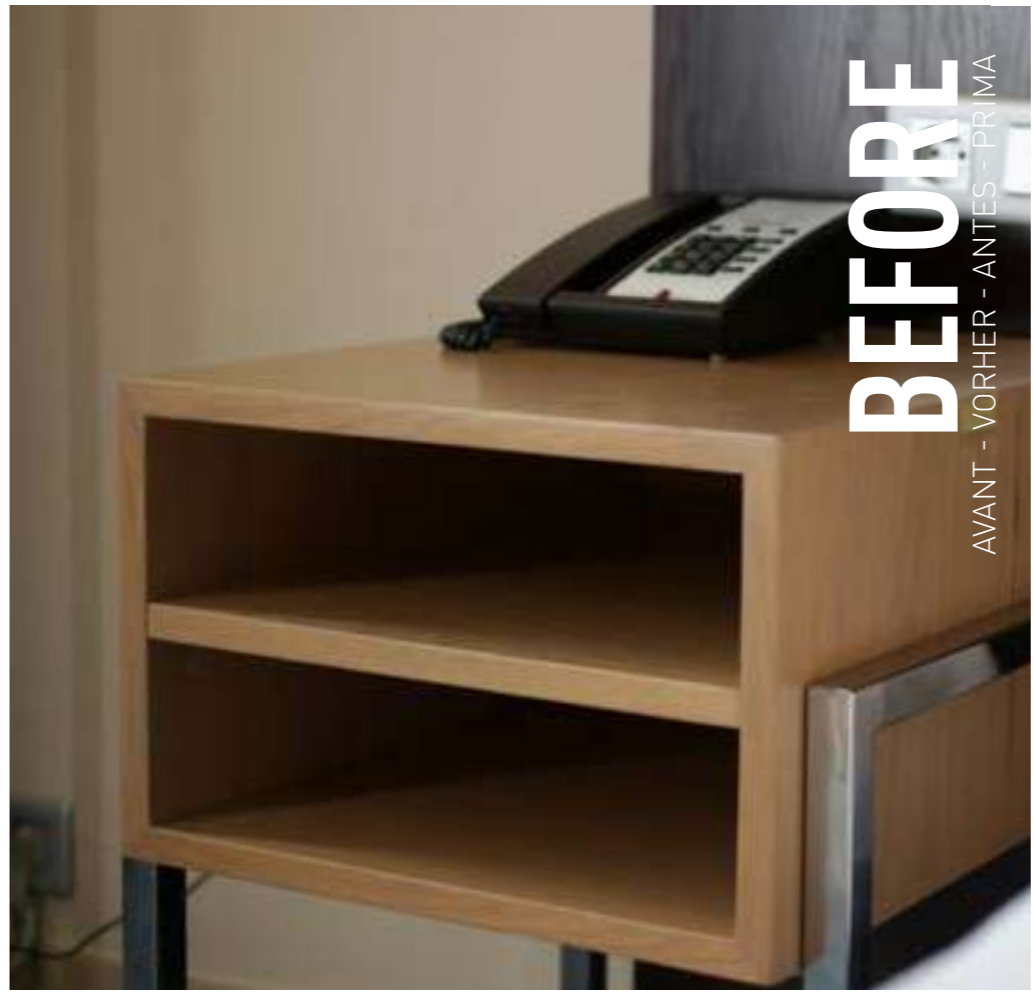
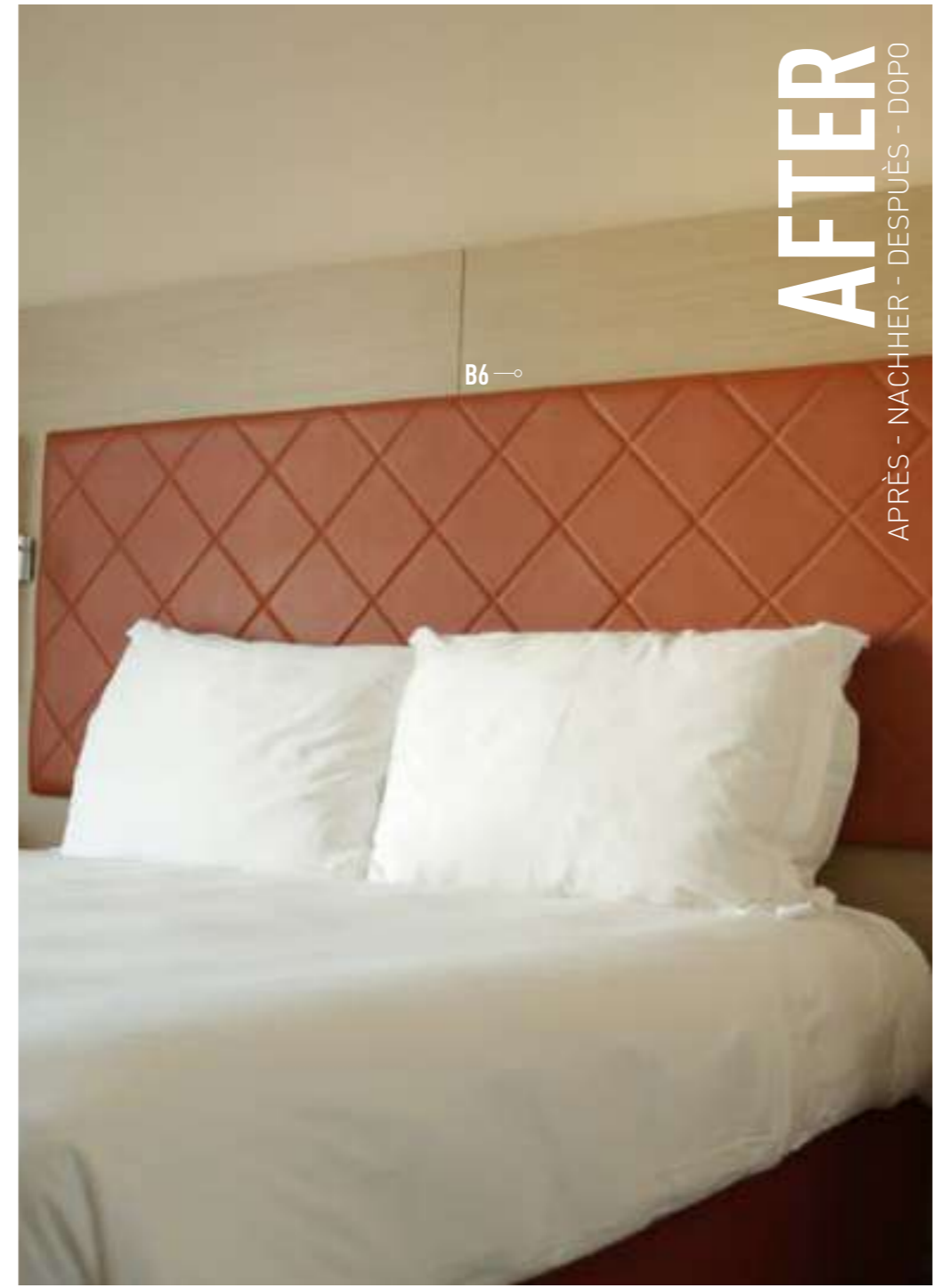
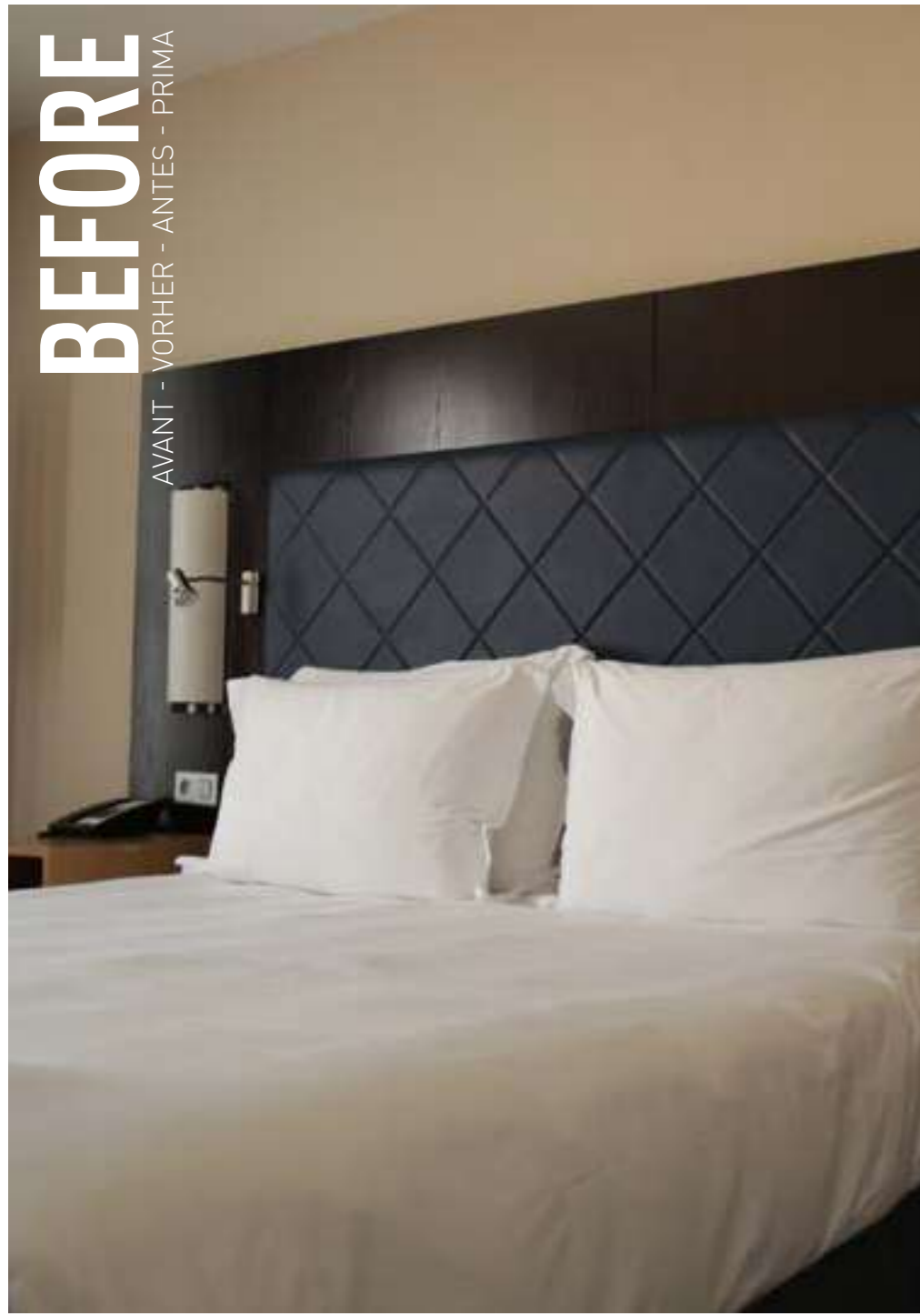


AFTER

APRÈS - NACHHER - DESPUÈS - DOPO

F7 —

TIM HOTEL
PARIS - FRANCE



RADISSON BLU

TOULOUSE - FRANCE



STUDENT ACCOMMODATION

UNITED-KINGDOM



M5 - SOLID COLOUR



TRAINING

FORMATION - AUSBILDUNG - FORMAZIONE - FORMACIÓN



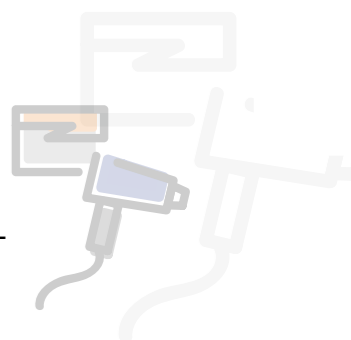
WANT TO BECOME A COVER STYL'
CERTIFIED INSTALLER?

2 DAYS TRAINING COURSE

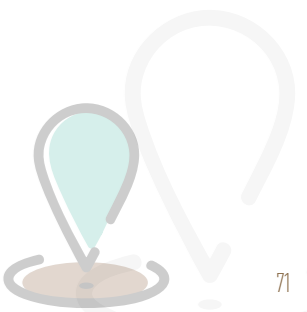
1/2 DAY
THEORITICAL



1,5 DAY
THEORITICAL



IN FOETZ,
LUXEMBOURG





Quality



Easy



Fast



Limitless



Cost Efficient

info@coverstyl.com





COVER STYL'

SMART INTERIOR DESIGN

79%

DES UTILISATEURS
CONSIDÈRENT LES AVIS
DES CLIENTS AUSSI
IMPORTANTES QUE CEUX
DE LEURS PROCHES

90%

DES VOYAGEURS SONT
INFLUENCÉS PAR LES
NOTES DES HÔTELS
SUR LES PORTAILS
AVANT DE RÉSERVER

COVER STYL' EST LA SOLUTION DESIGN DE RÉNOVATION HAUT DE GAMME AU PRIX LE PLUS BAS.

LE COVER STYL' VOUS PERMETTRA D'ATTEINDRE À
NOUVEAU LE MEILLEUR POSITIONNEMENT SUR TOUTES LES
PLATEFORMES DE RÉSERVATION EN LIGNE.

11%

1 POINT GAGNÉ
SUR TRIPADVISOR
AUGMENTE VOTRE
CHIFFRE D'AFFAIRE DE
11%

70%

DE CLIENTS
POTENTIELS PERDUS
SUITE À UN AVIS
NÉGATIF

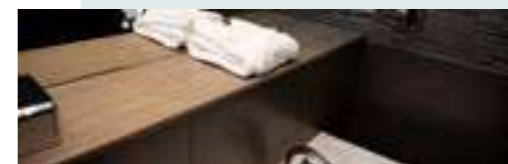


SOMMAIRE



CHAMBRES

P.8



SALLES DE BAIN

P.16



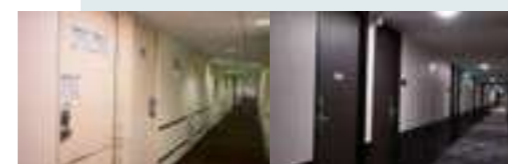
COULOIRS

P.22



LIEUX DE VIE

P.28



AVANT & APRÈS

P.34



POSE TEST

P.38

MARRIOTT Paris



■ AF08



MICHAEL KESER DIRECTEUR COVER STYL'

Avoir la responsabilité de superviser un produit tel que Cover Styl' n'est pas une tâche facile. Mon plus grand défi consiste à éduquer les gens à changer leur état d'esprit quant à cette solution de rénovation, faire connaître ce produit et leur faire comprendre que Cover Styl' est bien plus qu'un simple film adhésif.

Chez Cover Styl' nous avons un dicton: **Pourquoi remplacer quand on peut rénover ?**

Cette philosophie est incroyablement puissante. Il ne s'agit pas uniquement d'économiser beaucoup d'argent, c'est aussi un produit qui favorise l'économie circulaire et donc le développement durable.

Le style et la qualité ne sont cependant pas mis à l'écart, c'est là que Cover Styl' se démarque vraiment. Nous créons des produits de haute qualité et travaillons en étroite collaboration avec les plus grands designers et créateurs de tendance pour nous assurer que notre gamme soit à la fois magnifique et exclusive.

Cette brochure contient certaines de nos plus belles réalisations et beaucoup sont encore à venir.

"La qualité et le prestige"

COVER STYL'



POURQUOI REMPLACER QUAND ON PEUT RÉNOVER ?

Cover Styl' est un film adhésif qui permet de recouvrir la plupart des surfaces en un temps record, pour un moindre coût. Des textures plus vraies que nature.



Texturé



Rapide



Qualité



Thermoformable



Certifié



Personnalisable



Style



Économique



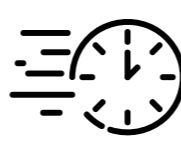
Facile



Garrantie



Large gamme



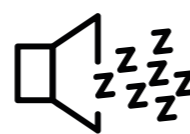
Sans interruption



Hygiénique



Illimité



Sans
dérangement



Résistant
au feu

ILS NOUS FONT CONFIANCE

SOFITEL
HOTELS & RESORTS

ACCOR HOTELS

Marriott
HOTELS - RESORTS - SUITES

NOVOTEL
HOTELS, SUITES & RESORTS

Club Med

Radisson
HOTELS & RESORTS

H
Holiday Inn

ibis
HOTELS

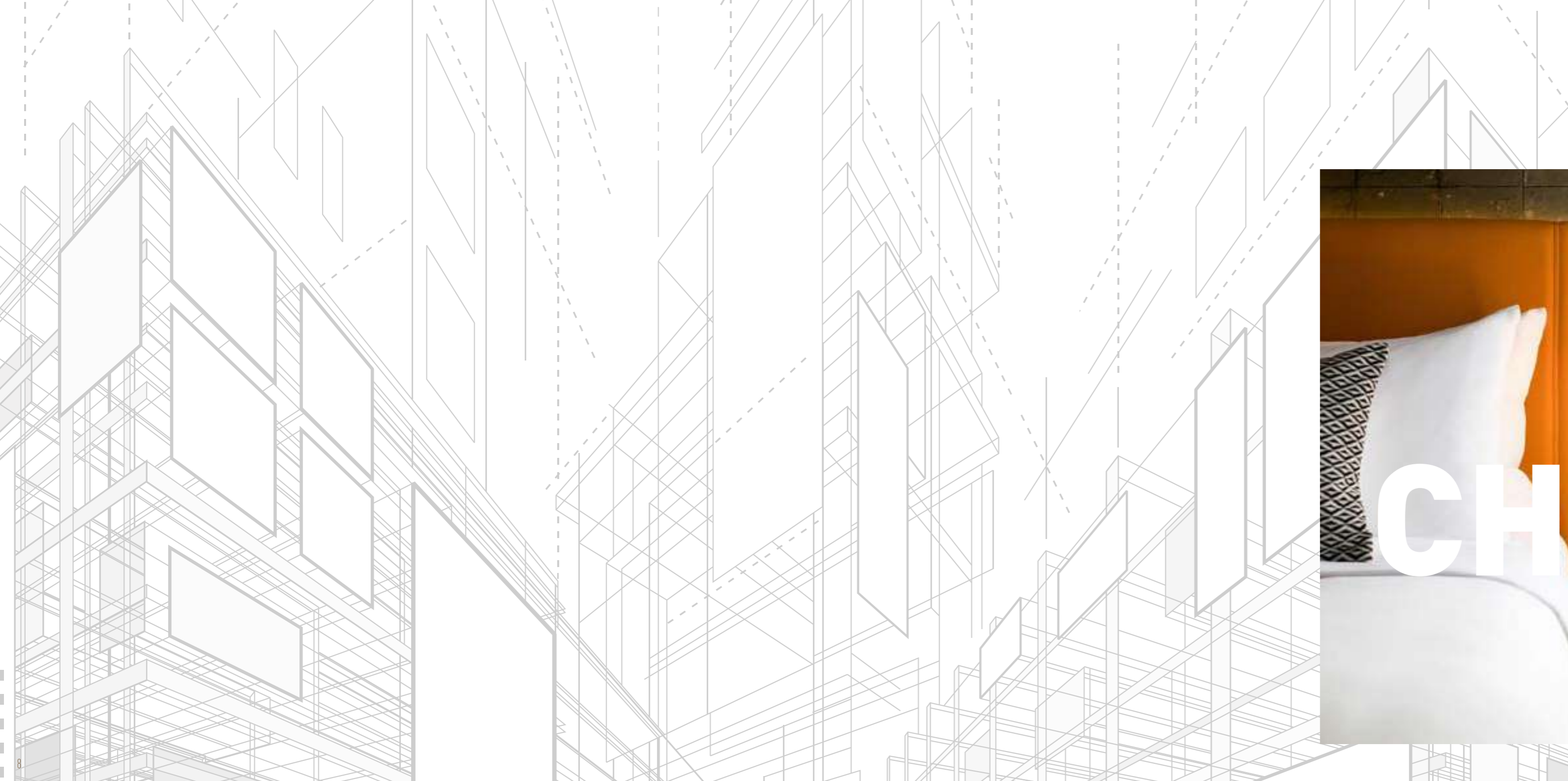
BW
Best Western

TIMHOTEL

IAI Hôtel***Appia

Hotel Perfect

...ET VOUS ?

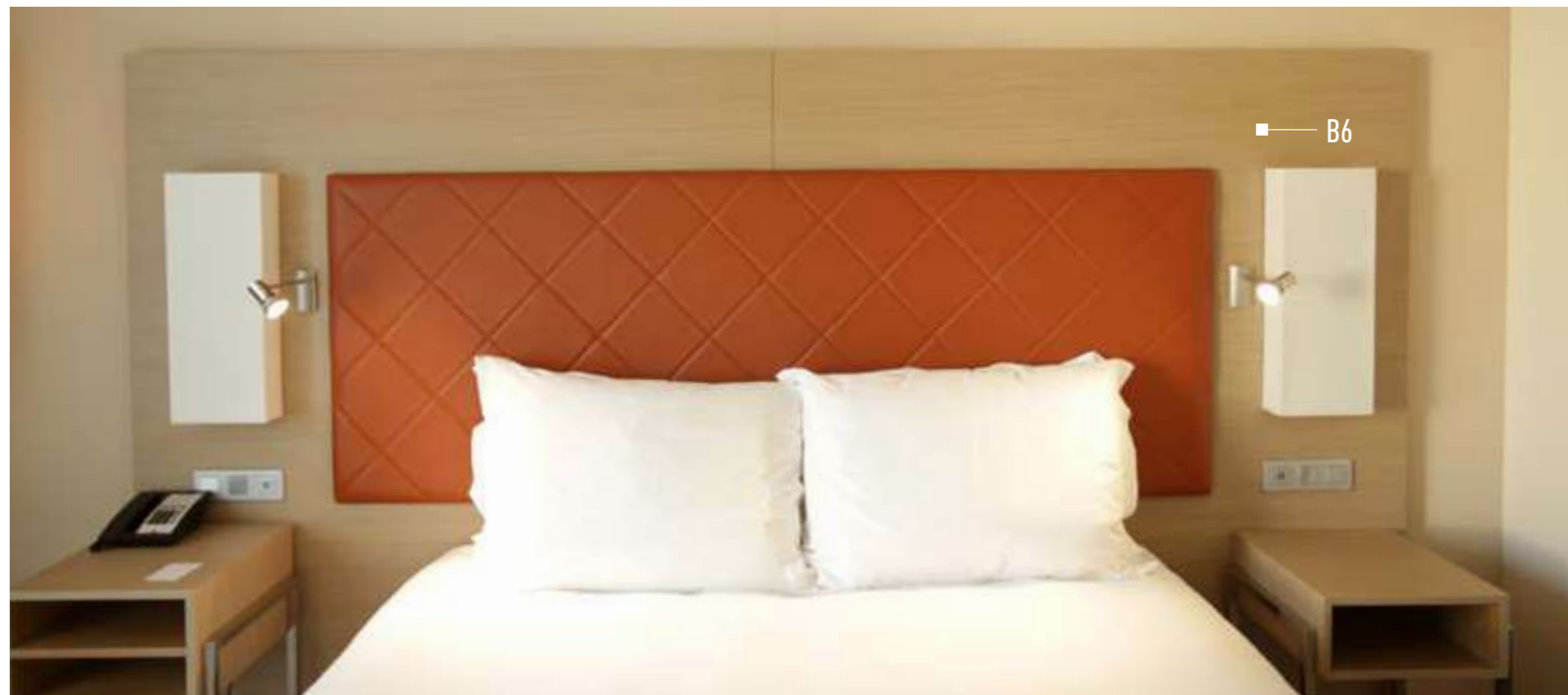


CHAMBRES



RADISSON BLU

Toulouse



JEAN-BAPTISTE BOURCIER
DIRECTEUR TECHNIQUE ET SÉCURITÉ
RADISSON BLU

"Il n'y a pas de limite"

J'ai découvert ce produit que je ne connaissais pas : Le Cover Styl' ! Nous avons tous des aprioris, moi le premier, sur ce type de rénovation mais j'ai pu découvrir une solution qui a résolu beaucoup de mes difficultés. Suite à la rénovation des 200 chambres de notre Radisson Blu, j'ai pu constater les avantages suivants : un prix qui est 2 à 5 fois moins cher qu'une rénovation classique, un gain de temps certain via la rapidité d'exécution et la facilité d'adaptation, ce qui n'est pas toujours évident avec d'autres corps de métier. Enfin les textures et les couleurs de la gamme me laissent penser qu'il n'y a pas de limite. Cover Styl' fait honneur à notre slogan qui est « Yes I can ».

HOLIDAY INN

Zurich



CLUB MED

Albufeira



FRÉDÉRIC DAVI

DIRECTEUR ADJOINT DES CONSTRUCTIONS

CLUB MED

"Une rapidité de mise en oeuvre"

En tant que professionnel de la construction, particulièrement sur des sujets de haut de gamme, j'ai été conquis par la solution Cover Styl'. Pour Club Med, Cover Styl' est une bonne alternative au remplacement de produits menuisés, portes, éléments d'agencement ou de mobilier, dans le cadre de la rénovation de nos villages de vacances. Cette solution technique présente le double avantage d'une rapidité de mise en oeuvre et d'un impact économique très inférieur à une rénovation classique. Les possibilités décoratives, tant du point de vue de la finition plus ou moins structurée que des couleurs et teintes possibles, offrent aux décorateurs travaillant sur ces sujets de s'exprimer aussi naturellement qu'avec des produits plus conventionnels. Après une première expérience très satisfaisante, Cover Styl' entre aujourd'hui dans le panel des produits référencés au sein de notre groupe.



SALLES DE BAIN

HOTEL MAYORAZGO MADRID



MARRIOTT Paris



PRINCESA DE EBOLI

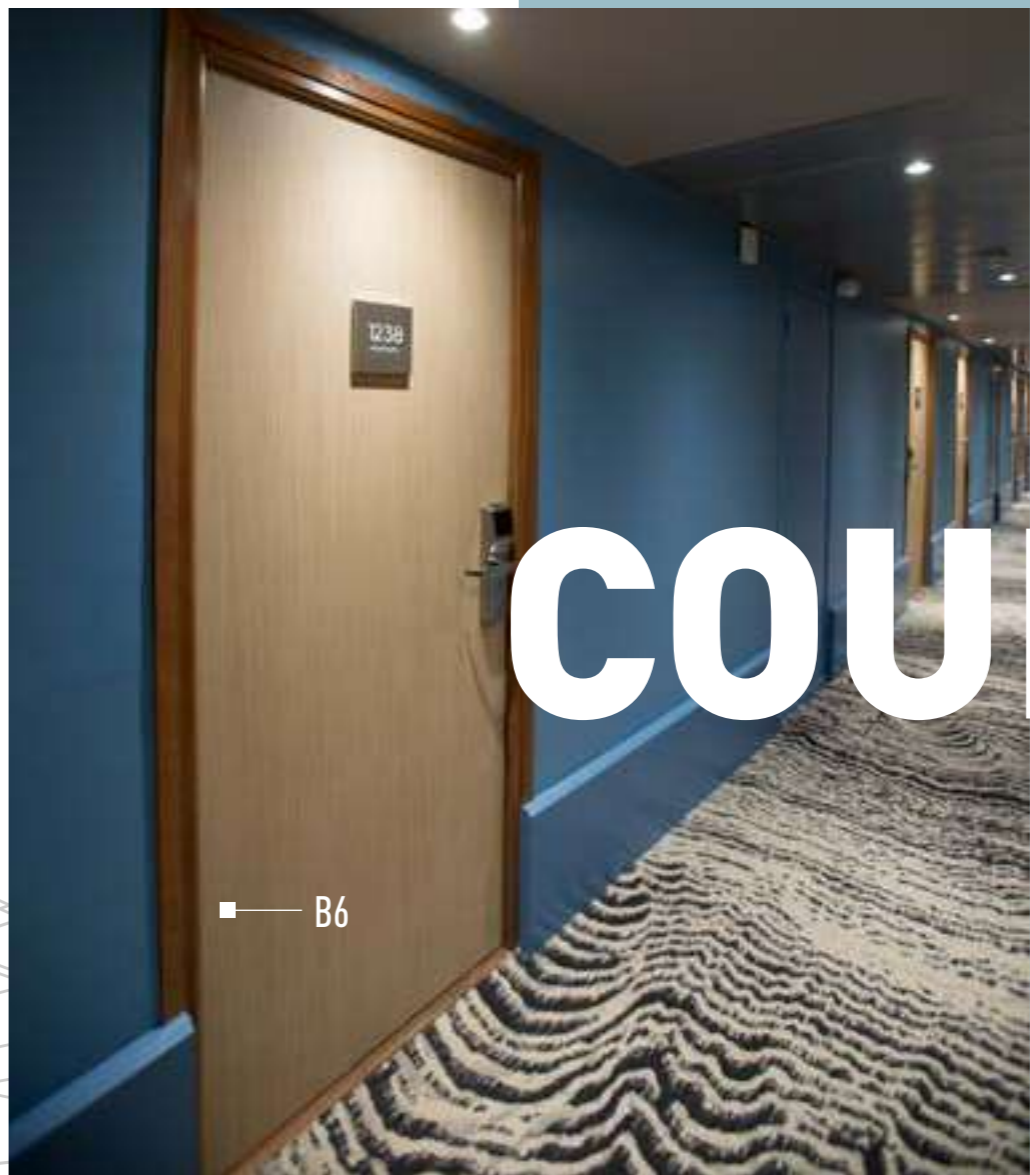
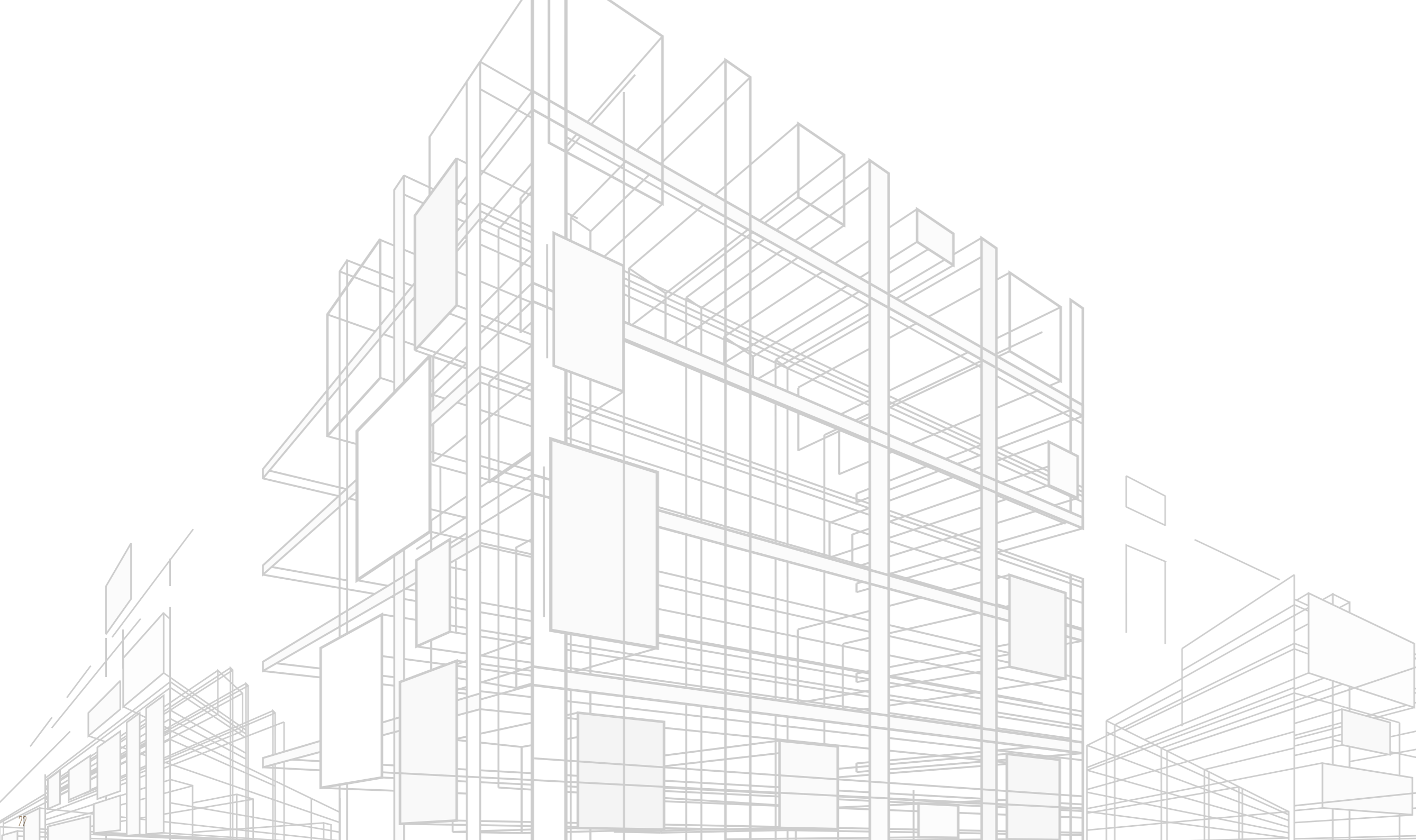
Pinto



MARIA SANTOS ALCALÁ
ARCHITECTE D'INTÉRIEUR
ESTUDIO MARIA SANTOS

**"Une grande aide pour
satisfaire mes clients"**

En tant que Designer d'Intérieur en Espagne, je trouve dans Cover Styl' un moyen élégant, rapide, authentique et économique de rénover ou mettre en valeur les intérieurs, bureaux, murs ou meubles. Leur large choix de motifs est d'une grande aide pour satisfaire la plupart de mes clients !



COULOIRS

■ — B6

TIM HOTEL

Paris



NOVOTEL

Le Touquet



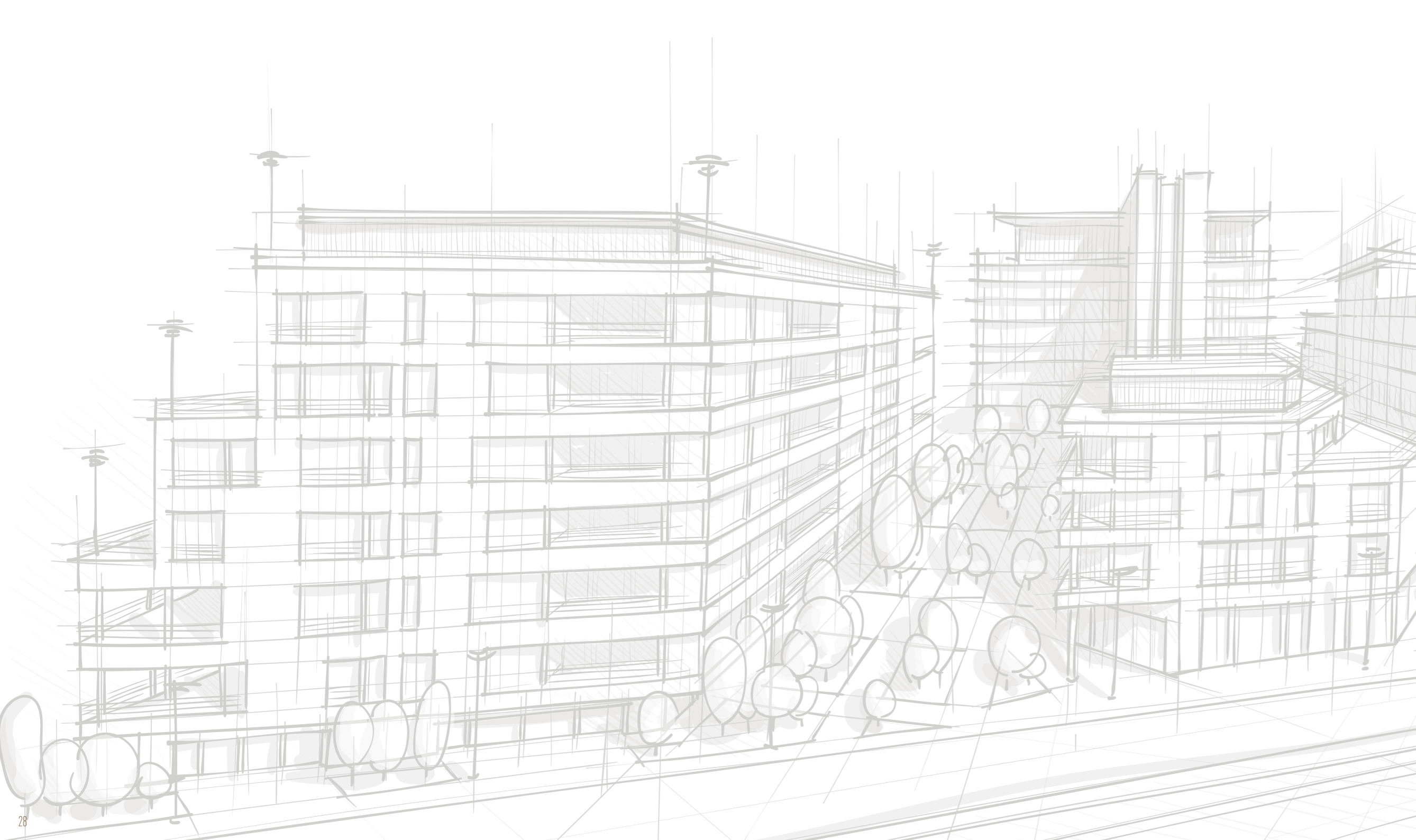
XAVIER DELVAUX

DIRECTEUR MARKETING

"Créativité et confort pour vos clients"

Séjourner dans un hôtel est une expérience, c'est changer de son quotidien à la maison ou au travail. Un des objectifs du Cover Styl' est de rendre cette expérience agréable, surprenante, de placer le client de l'hôtel dans un environnement unique tant visuellement qu'au toucher. Pour l'établissement, il est aussi très important de ne pas devoir fermer pour pouvoir rénover et donc offrir cette nouvelle expérience à leurs clients dans un temps record et sans nuisance. Le Cover Styl', c'est une rénovation ultra rapide, créative avec plus de 600 références différentes. Le Novotel Le Touquet est un exemple parmi d'autres.

Les architectes et les designers d'intérieur trouvent au travers du Cover Styl' une véritable source d'inspiration qui transformera votre établissement en une véritable expérience client.



LIEUX DEVIE

NOVOTEL Paris



"Rapport qualité/prix incontestable"

Le grand potentiel de ce produit de recouvrement est véritablement surprenant, d'autant plus que les supports d'installation n'étaient pas de simples surfaces planes. Au-delà des designs très sympathiques proposés par Cover Styl', l'architecte avait néanmoins sélectionné certains RAL spécifiques, qui ont pu être customisés pour cette rénovation. Cet avantage a présenté un gain de temps considérable pour notre établissement : un véritable atout supplémentaire pour Cover Styl'. Aussi, je conseille bien entendu ce produit pour l'hôtellerie au vu de son rapport qualité/prix, juste incontestable. Je suis enfin clairement convaincu que le bouche-à-oreille fera de Cover Styl' la solution de rénovation par excellence dans le futur.

DOMINIQUE GRANDJONG
DIRECTEUR
NOVOTEL



HOLIDAY INN

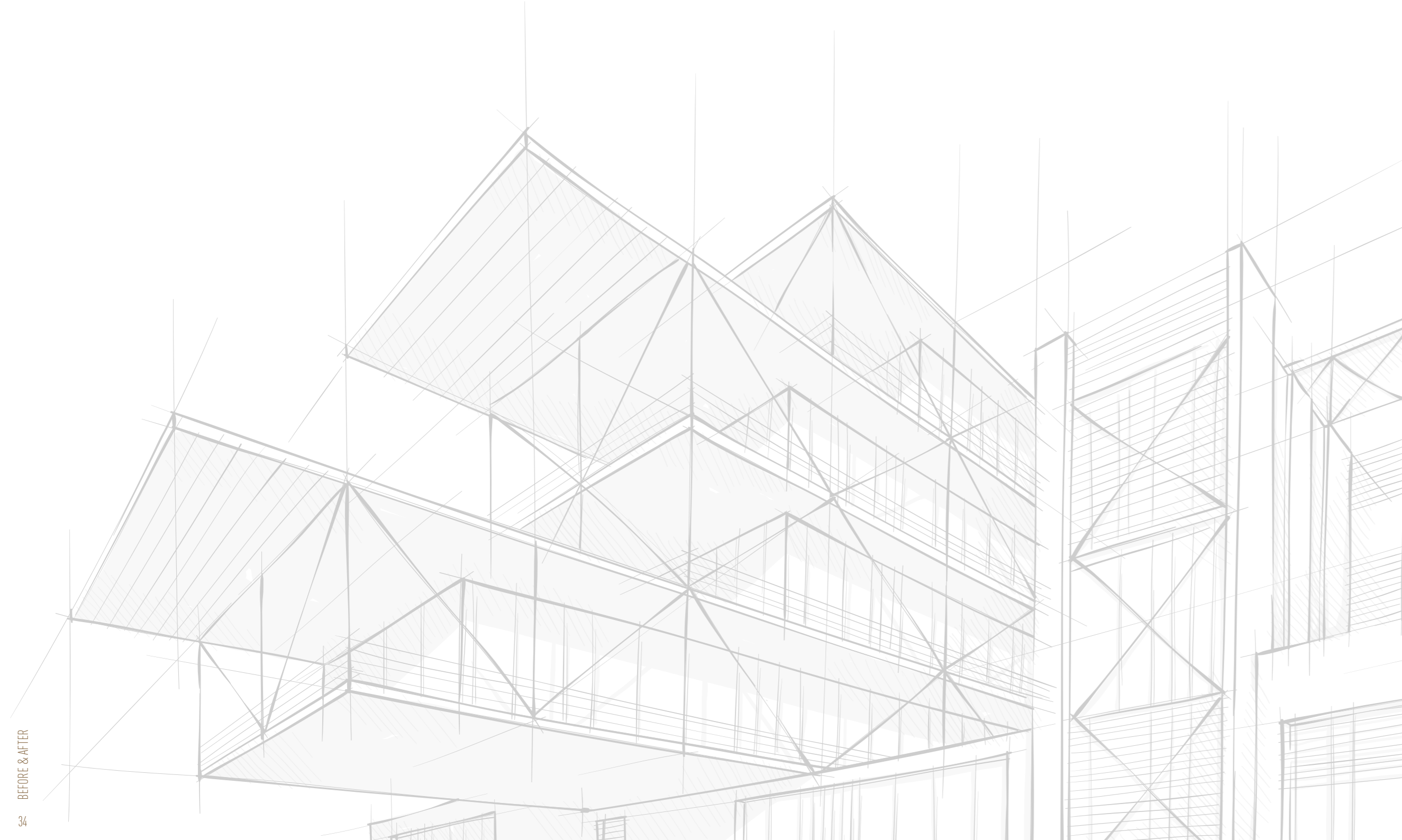
Paris



■ B4



■ Q2



**AVANT &
APRÈS**



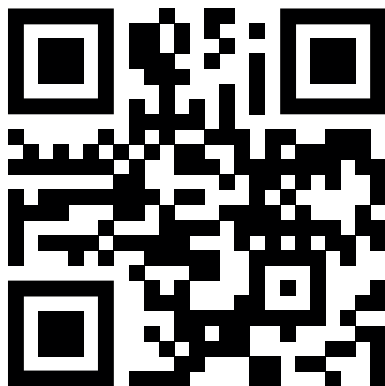
Chez **COMACCESS**, nous offrons également des services d'impression personnalisée grâce à notre parc machines de pointe. Nous pouvons imprimer le visuel de votre choix pour répondre à vos besoins spécifiques. Contactez-nous pour en savoir plus



COMACCESS est également votre partenaire pour l'impression numérique, qu'il s'agisse de petits ou grands formats, d'enseignes ou de signalétique.

Nous offrons une large gamme de services
pour répondre à tous vos besoins

**Scannez le code ci-dessous
pour en savoir plus**





09 86 11 26 26

contact@comaccess.fr
www.comaccess.fr

Siège social

4 bis boulevard Compiègne
13014 MARSEILLE

AGENCE Région Sud & Showroom
24/26 Bd Gay Lussac
13014 MARSEILLE

